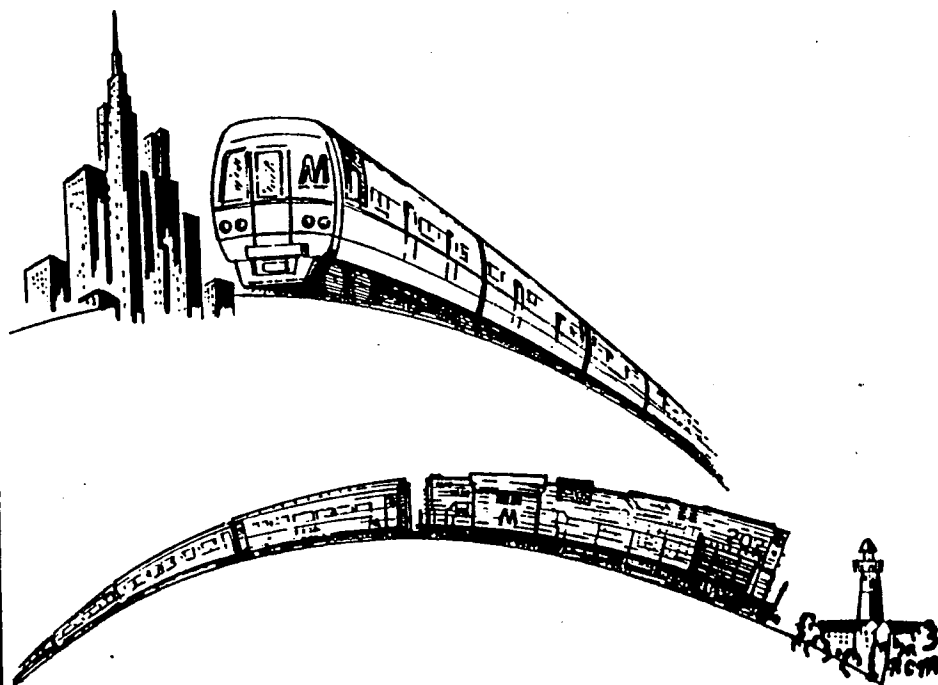


THE LONG ISLAND RAIL ROAD



EQUIPMENT DIAGRAMS

MAINTENANCE OF EQUIPMENT DEPARTMENT

REVISED 1977

THE LONG ISLAND RAIL ROAD

INTERPRETATION OF PASSENGER CAR CLASSIFICATIONS

<u>PREFIX</u>	<u>DESCRIPTION OF CLASS</u>
P	- LOCOMOTIVE HAULED PASSENGER COACH OR PARLOR CAR.
PT	- LOCOMOTIVE HAULED PASSENGER COACH USED IN PUSH-PULL SERVICE AND REQUIRES AUXILIARY 600 VOLT POWER SUPPLY.
PP	- SAME AS <u>PT</u> CLASS EXCEPT IT IS A PARLOR CAR.
BG	- LOCOMOTIVE HAULED BAR-GENERATOR CAR USED WITH CLASS <u>PT</u> AND <u>PP</u> CARS. SUPPLIES 600 VOLT AUXILIARY POWER.
M	- ELECTRIC MULTIPLE UNIT PASSENGER CAR.

SUFFIX

M	- MULTIPLE UNIT
S	- STEAM
C	- AUTOMATIC SPEED CONTROL

INTERPRETATION OF LOCOMOTIVE CLASSIFICATIONS

PREFIX

GP	- GENERAL PURPOSE
L	- LOCOMOTIVE
GS	- GENERAL ELECTRIC CO. (Switcher)
AS	- ALCO SWITCHER
AGP	- ALCO GENERAL PURPOSE
PC	- POWER CAR
E	- ELECTRO MOTIVE DIVISION - GEN. MOTORS CORP.


TABLE OF CONTENTS

(NUMERICALLY ARRANGED)

CAR NOS.	CLASS OF CAR	SHEET NO.
2000	BUSINESS CAR	1
2002	P74A	2
2011 TO 2021	PP72B	3
2073	P80F	4
2081, 2082	P80G	5
2101, 2104	BG72B	6
2501 TO 2522 (EXCEPT 2517)	MP72C	7
2602 TO 2674	MP72T	8
2701 TO 2723 (ODD NOS. ONLY)	PT75	9
2705 (BAR CAR)	PT75	10
2702 TO 2736 (EVEN NOS. ONLY)	PT75A	11
2792, 2794, 2796, 2798	PT72C	12
2801 TO 2844	PT72A	13
2845 TO 2898 (2890,2892,2894 BAR CARS-SEE SHEET #14)	PT72C	7

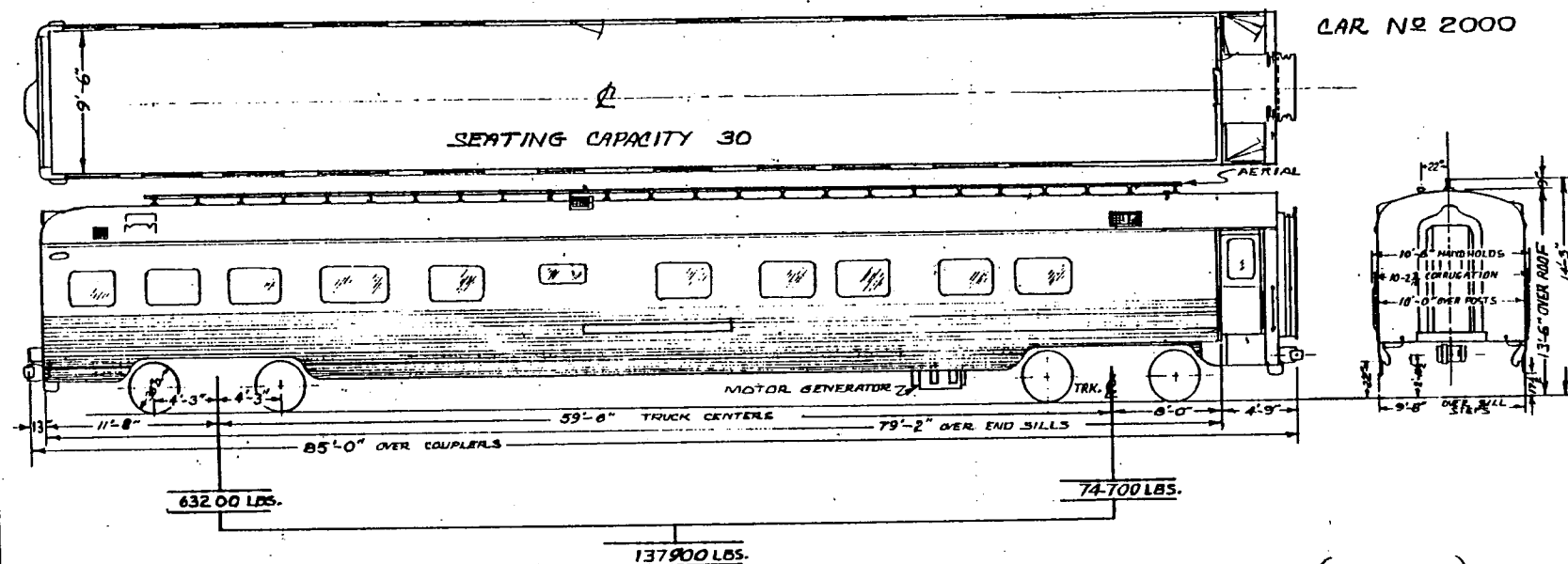
PASSENGER CARS

(NUMERICALLY ARRANGED)

	CAR NOS.	CLASS OF CAR	SHEET NO.
PASSENGER CARS	2890, 2892, 2894 (BAR CARS)	PT72C	14
	2901 TO 2980 (EXCEPT NOS. 2949 & 2957)	P72	15
	2990, 2991, 2992 (BAR CARS)	P72	16
	7522, 7523, 7525, 7527, 7530, 7544, 7550 (BAR CARS)	P74B	17
	7526, 7533 TO 7541, 7545 TO 7549	P74B	18
	9001 TO 9769 (ODD NOS. ONLY)	M-1	19
	9002 TO 9770 (EVEN NOS. ONLY)	M-1	20
			
LOCOMOTIVES	100 TO 107	E-10	21
	150 TO 172	E-15	22
	222 TO 229	L-2	23
	250 TO 277	E-20	24
	398 & 399	GS-1	25
	600 TO 610	PC-6	26
	611 TO 618	PC-6	27

BUSINESS CAR AMAGANSETT

CAR NO 2000

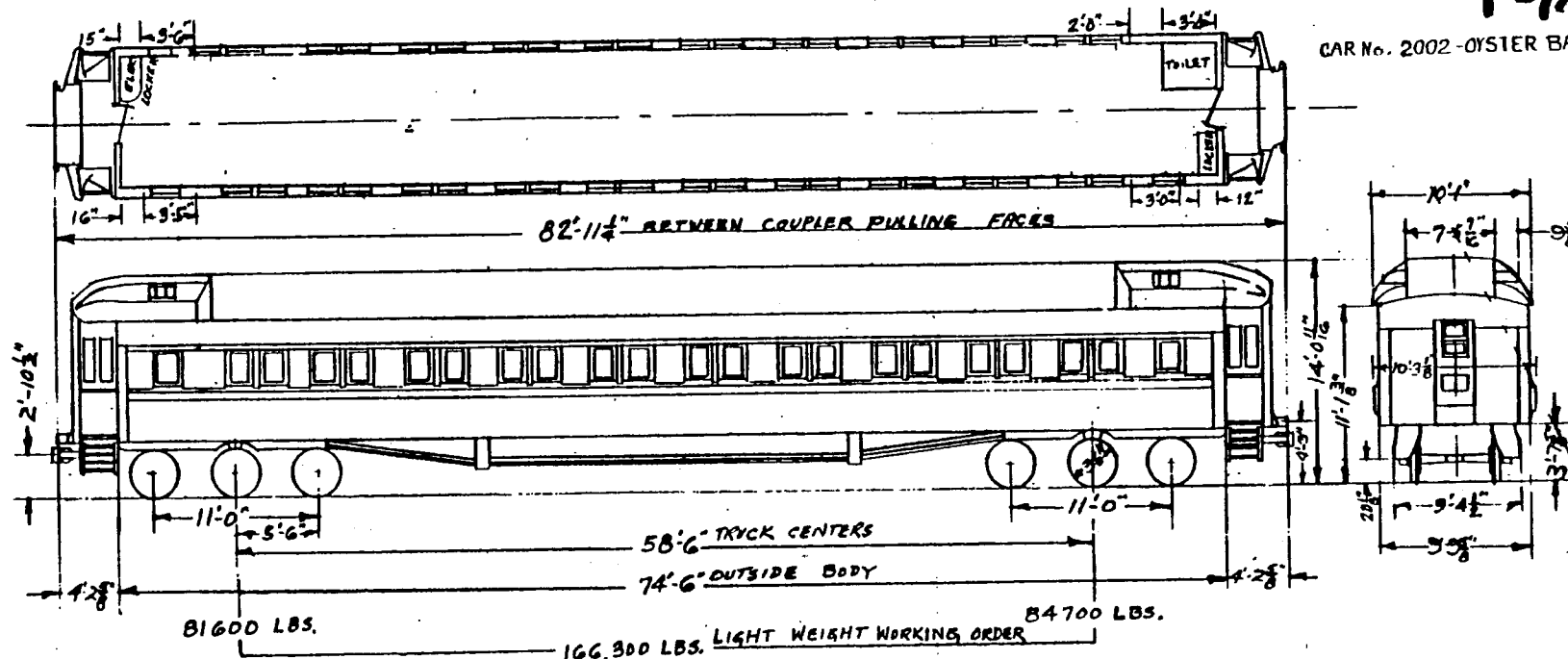
FORMERLY B & O C & O (NAPPANEE)
CAR 1500

GENERAL DATA

BATTERY BOX - 64 Volts 2-DOUBLE	AIR CONDITIONING EQUIP'T. - FRIGIDAIRE	LIGHT WEIGHT - VEST. END - 74700
MOTOR GENERATOR - GE - G.M.A. - 150-A3 - 20/35 KW.	HEATING - THERMOSTAT - VAPOR ZONE	LIGHT WEIGHT - OBSERVATION END - 63200
TRUCK - CAST STEEL - CLASS NO 37	LIGHTING - INCANDESCENT & FLUORESCENT	LIGHT WEIGHT - TOTAL - 137900
TRUCK BRAKE - SIMPLEX UNIT CYL. CLASP	WINDOWS - A & W BREATHER TYPE	CONSTRUCTION - STAINLESS STEEL
BRAKE SCHEDULE - WABCO "HSC" - 4-12 x 10 CYLS. WITH ELR. BR. SPEED GOV. & A.R. DECELOSTATS	WINDOW BLINDS - LOUNGE - VENETIAN	INTERIOR FINISH - STEEL
AUTOMATIC END DOOR OPERATOR - NAT'L PNEU.	WINDOW BLINDS - PASSWAY, Bd. ROOM - A & W. CARLE TYPE	BUILT BY FULLMAN - STD. CAR MFG. Co. 1952
MAKE & SIZE OF BEARING - 6 X 11 HYATT		

P-74A

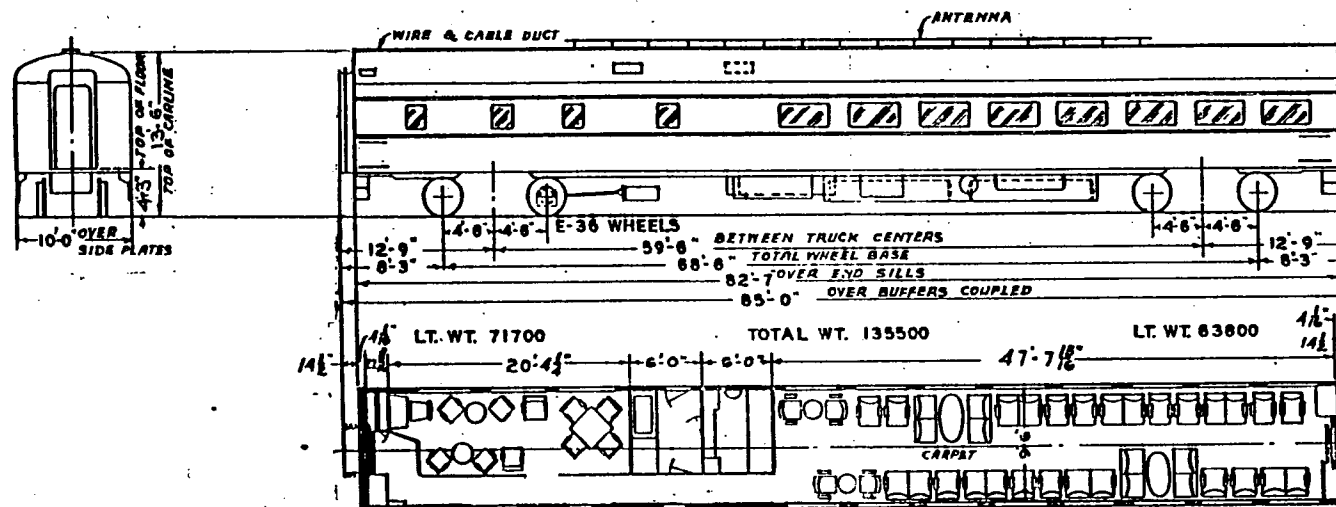
CAR No. 2002-OYSTER BAY



~ GENERAL DATA ~

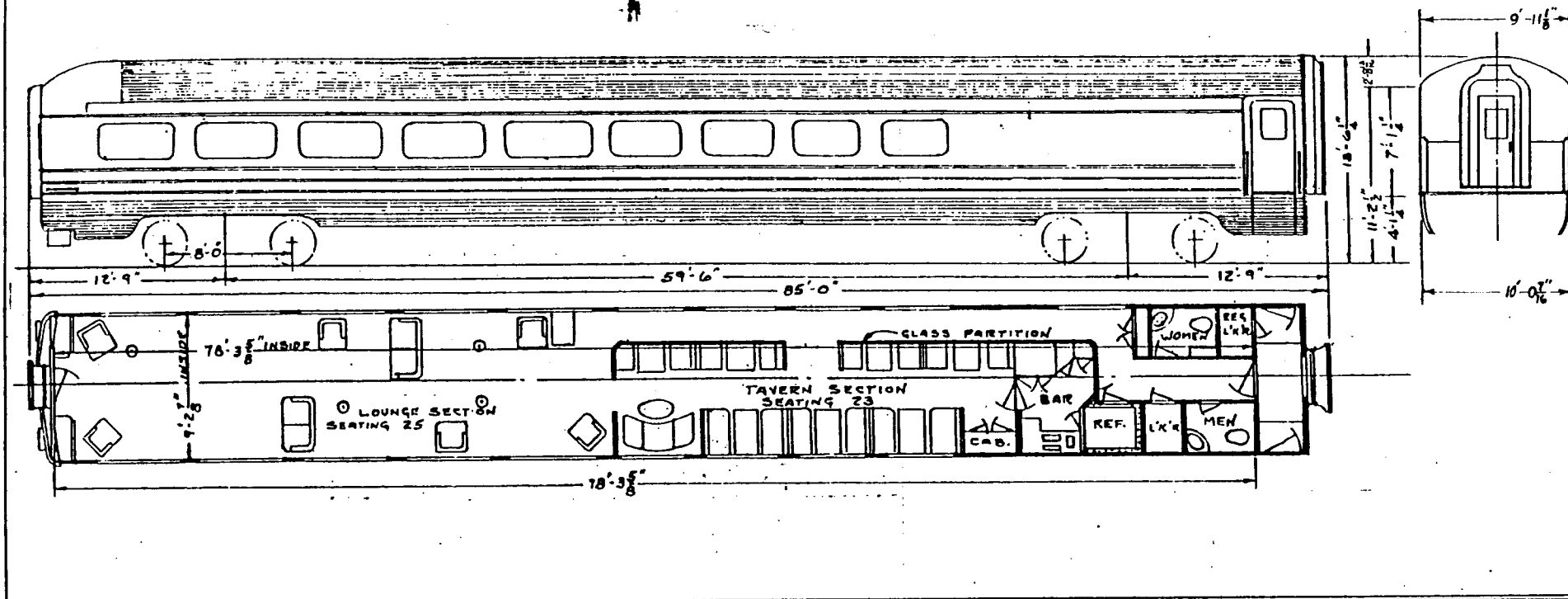
TYPE OF CAR - LOCO. HAULED		MAKE & TYPE OF A.C. EQUIP. - PULLMAN MECH.	
CLASS OF CAR - P-74-A		MAKE & TYPE OF ETO. EQUIP. FOR STEAM UNITS	
TYPE OF CONSTRUCTION - RIVETED			
CAR NUMBERS 2002	NO. & SIZE OF BRAKE CYL'S. - 1-18x12 CYL.	MAKE & TYPE OF LIGHT FIX.	MAKE & TYPE OF MARKER LIGHTS - Elec 5 ft
SEATING CAP'Y. 60	MAKE & SCHEDULE OF AIR BRAKES - WABCO-UCB.	NO. & TYPE OF VENTILATORS	
MANUFACTURER PULLMAN		NO. & TYPE OF WATER COOLERS -	
ORDER NO.	MAKE & TYPE TR'K BRAKE	CAP'Y. OF DRINKING WATER TANK	MAKE & TYPE CAP'Y. BATT. EX:K.W: 180 A.H.
YEAR BUILT 1924	MAKE & TYPE OF HAND BRAKE	CAP'Y. OF WASH WATER TANK	NO. OF JUMPER RECEPT. 2 TRAIN LINE
MIN. RAD. OF CURVE SINGLE CAR	MAKE & TYPE OF COUPLER TYPE "D"	NO. OF TOILETS 1	NOTE "A" <small>RIGHTED FORMERLY FROM</small>
MIN. RAD OF CURVE CAR COUPLED	MAKE & TYPE OF SASH ADAMS WEST	MAKE & TYPE OF LAVATORY CRANE, CORNER TYPE	2001 - 60 PRR HOUSTON
TYPE OF TRUCKS -	OUTSIDE FINISH STEEL	MAKE & TYPE OF HOPPER FLUSH TYPE	2002 - 60 PRR BELFAST
WEIGHT OF TRUCK COMPLETE	TYPE & THICKNESS OF INSUL'N.		2003 - 58 PRR SULLY WASH
MAKE, TYPE & SIZE OF BEARINGS <small>FRICTION SA 9"</small>	MAKE & TYPE OF SEATS CLUB CHAIRS	MAKE & TYPE OF U.C. POWER PLANT - G.M. N:30560	
	SEATING COVERING	FUEL TANK CAP'Y. - 150 GALS.	
	MAKE & TYPE OF WINDOW SHADE		

P-80F
CAR # 2073



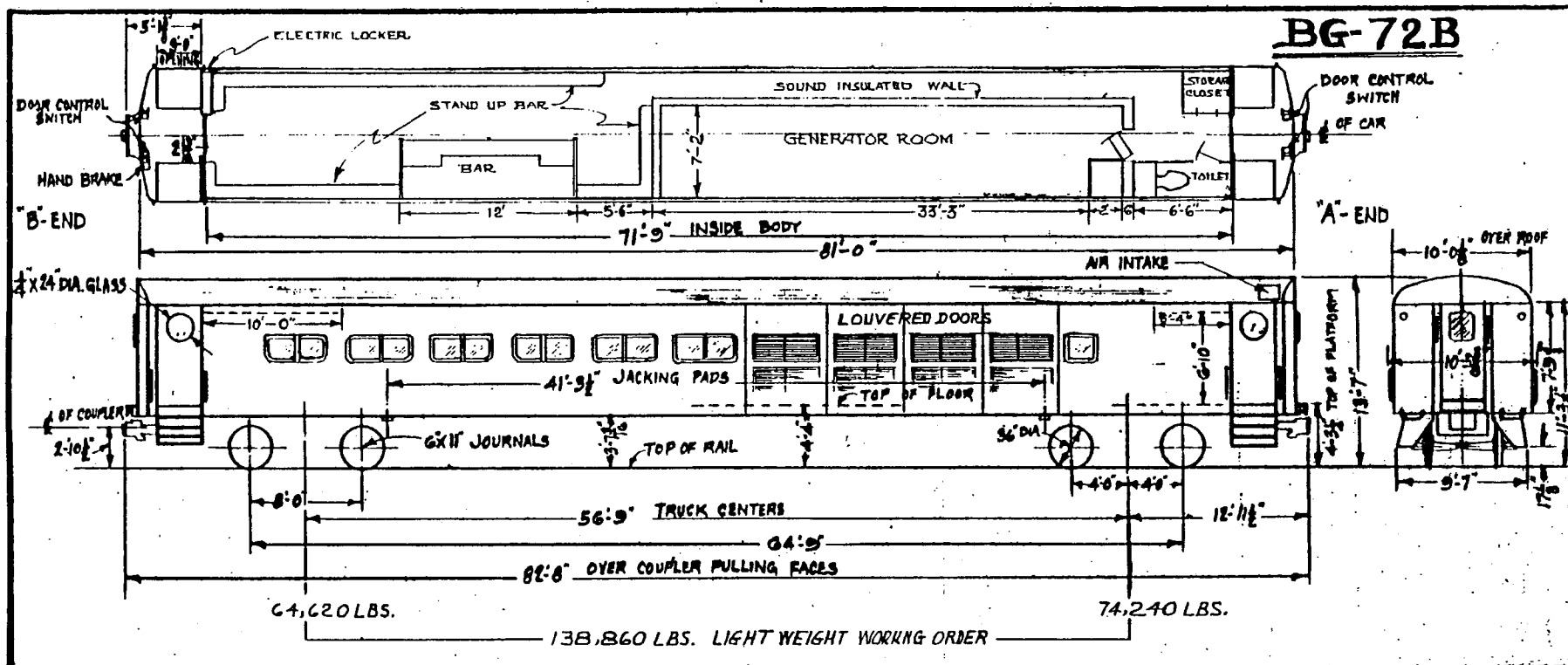
GENERAL DATA

TYPE OF CAR - CLUB LOUNGE	TYPE OF COUPLER - TIGHT LOCK TYPE - H	
SEATING CAP. 50	DRAFT GEAR WAUGHMAT TWIN CUSHION	
GENERATOR - G.M.G. - 150-A2	YEAR BUILT - 1949	
FRIGIDAIRE EVAP. COND. ER-2B10	MANUFACTURER - A.C.F. CO.	
FRIGIDAIRE A.C. COMP. ER-36B4	FORMER RAIL ROAD - UNION PACIFIC	
WATER TANK - 200 GAL. EACH	CAR NAME :	
TYPE WATER SYST. - AIR PRESSURE		
TYPE OF BRAKES - DISC	2073 - TUCKAHOE	
AXLES - 6' X 11" A.A.R.		
TYPE OF HEAT - STEAM, FIN RAD., VAPOR		



GENERAL DATA

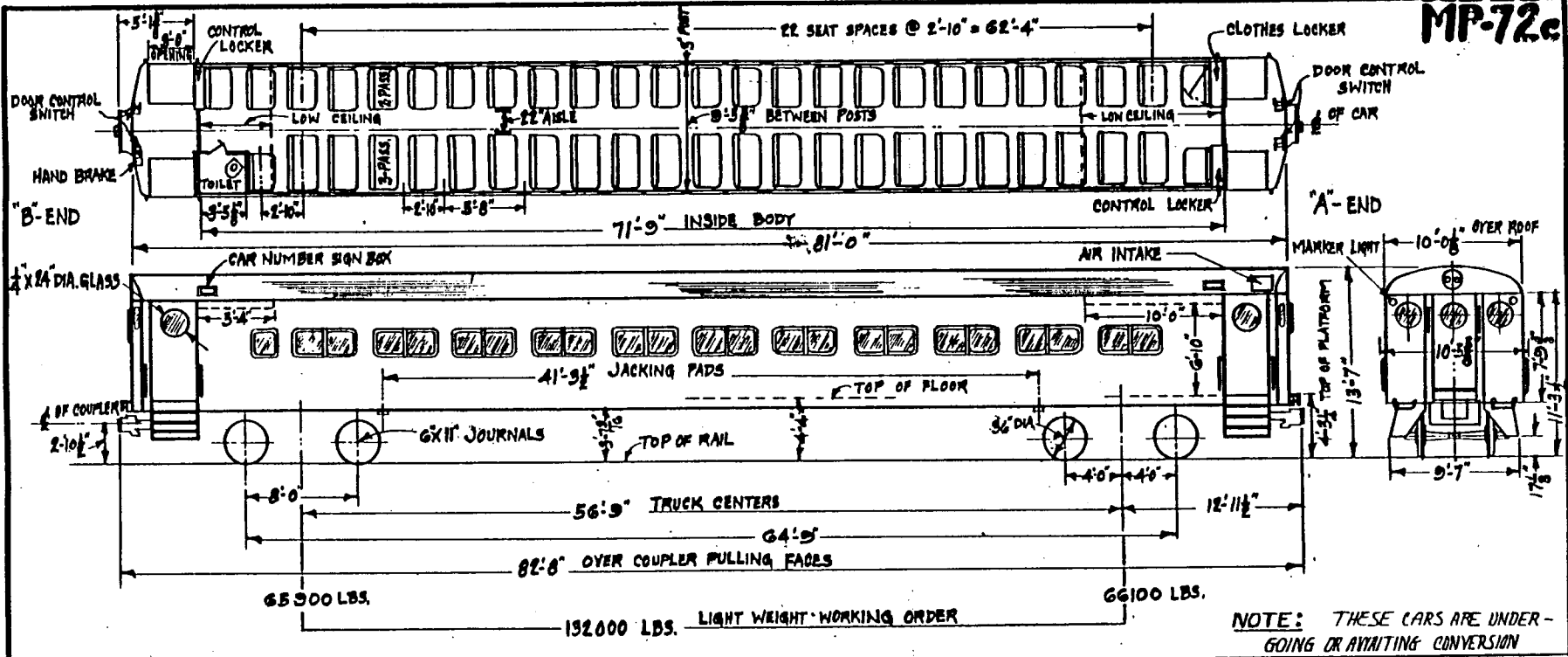
BUILT BY: BUDD CO.	HANDBRAKE: PEACOCK	WATER HEATER: VAPOR	CAR NAME & NO.	FORMER NO.
YEAR BUILT: 1949	HEATING SYSTEM: VAPOR-LOOP TYPE	WATER SUPPLY: WABCO.	2081 AQUEBOGUE	789
CAR NOS. 2081 - 2082	BATTERY: EXIDE	BRAKES: BUDD DISC BRAKES	2082 ASHAROKEN	790
BUILDERS REF.: LOT 9634-029	GENERATOR: 30 KW	JOURNALS: 6" X 11"		
FORMER OWNER: ERIE LACKAWANNA	GENERATOR AXLE PULLEY: SPICER DRIVE	BEARINGS: TIMKEN ROLLER		
SEATING CAPACITY: 48	LIGHTS: INCANDESCENT & FLOURESCENT	SIDE BEARINGS: DREWS		
A.B. SCHEDULE: HSC WITH D-22 AIR BK. VALVE	PLATFORM STEPS: O.M. EDWARDS	WHEELS: 36" DIA.		
BODY FINISH: STAINLESS (PAINTED)	PLATFORM TRAP DOOR: O.M. EDWARDS	BASIC TRUCK: BUDD w/INSIDE SW. HANGERS		
COUPLER: TIGHT LOCK - TYPE "H"	TYPE OF ROOF: TURTLE BACK	SHOCK ABSORBERS: HOWDE		
COUPLER CENT. DEVICE: CAR BUILDERS	WINDOW SASH: ADAM WESTLAKE-MOD. 36	AIR CONDITIONING: SAFETY		
DRAFT GEAR: VAUGH WM-6-DP	SEAT COVERING: MOHAIR & LEATHER	TOILET: FLUSH TYPE		



~ GENERAL DATA ~

TYPE OF CAR - BAR GENERATOR	NO. OF DIESEL GENERATORS - 2	MAKE & TYPE OF AIR COND. EQUIP. - FRIGORE, ALCO, MODEL 70N	NEW No.	OLD No.
CLASS OF CAR - B G-72B	MAKE & TYPE OF DIESEL - DETROIT BY 71	MAKE & TYPE OF HEATING EQUIP. - RAILWAY UTILITY, STRAP T.	2101	2610
TYPE OF CONSTRUCTION - WELDED	TYPE OF GENERATOR - LIMA 250 KW EA.		2102	2648
CAR NUMBERS - 2101 - 2104	NO. & SIZE OF BRAKE CYLS. PER TRUCK - 2 CYLS 10X8"	MAKE & TYPE OF LIGHT FIXTURES - SAFETY, CEILING FLOOR	2103	2601
SEATING CAPY - NONE	MAKE & SCHEDULE OF AIR BRKES - WEST AB 022 TOE	NO. & TYPE OF VENTILATORS	2104	2608
MANUFACTURER - PULLMAN STANDARD	MAKE & TYPE TRK. BRAKE - A.S.P. SIMPLEX CLASP.	NO. & TYPE OF WATER COOLERS - NONE		
ORDER N° - 6963, 6974	MAKE & TYPE OF HAND BRAKE - FEA COR. 1800 LBS. IDEN. T.	CAPY. OF DRINKING WATER - NONE		
YEAR BUILT - 1955, 1956 (REBUILT 1976)	MAKE & TYPE OF COUPLER - AMER. ST. FBY MPTT 9"	CAPY. OF WASH WATER TANK - 60 GAL'S		
MIN. RAD. OF CURVE SINGLE CAR - 240'	MAKE & TYPE OF SASH - HUNTER CO. STATIONARY	FUEL CAPACITY - 412 GALS.		
MIN. RAD. OF CURVE CAR COUPLED	OUTSIDE FINISH - HIGH STRENGTH LOW ALLOY STEEL	MARKER LIGHTS - PYLE NATIONAL 4		
TYPE OF TRUCKS - CR EQUALIZER BAR TYPE	TYPE & THICKNESS OF INSULTN - FIBERGLASS BOARD, 5/8" MIN			
TYPE OF TOILET - MICROPHOR	INTERIOR WALL - RED CARPET			
WEIGHT OF TRAILER TRUCK COMPLETE -				
MAKE, TYPE & SIZE OF BEARINGS - HYATT DALLER 6X11"				

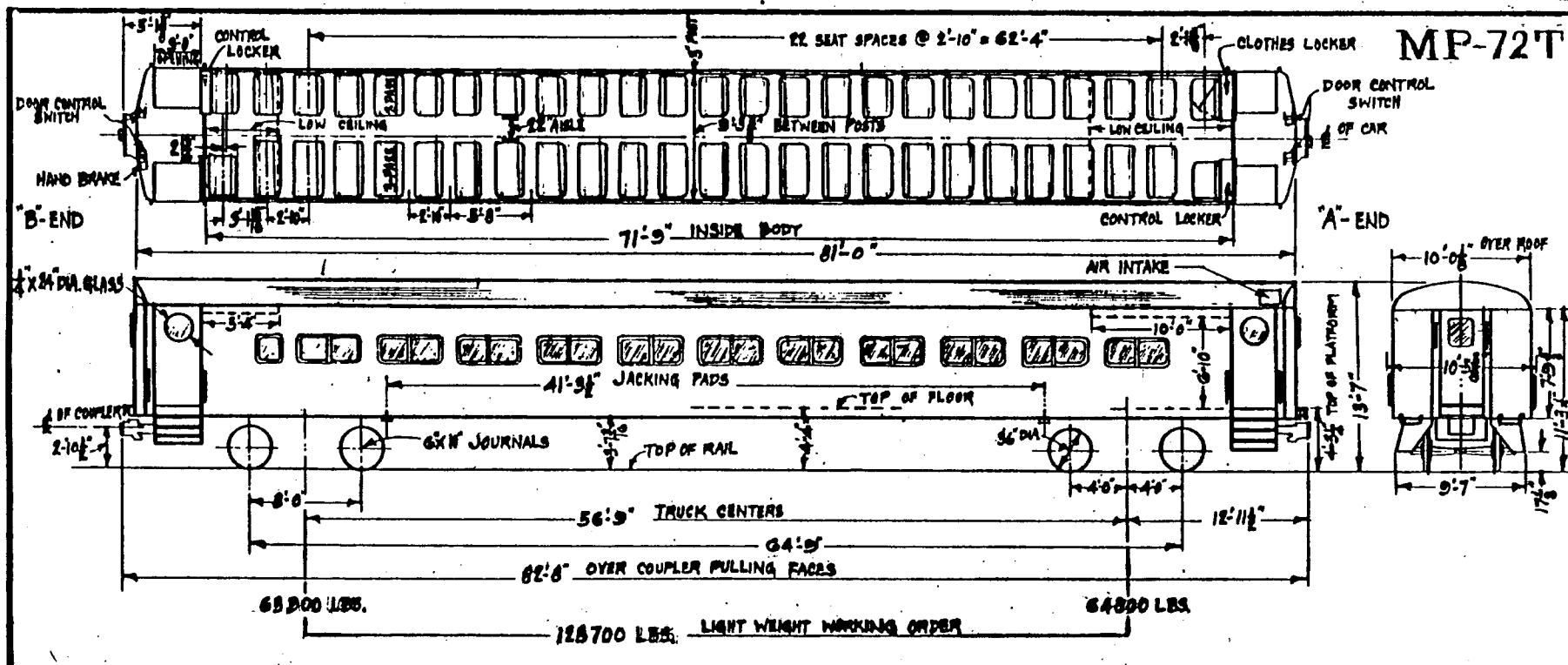
MP-72c



NOTE: THESE CARS ARE UNDER-GOING OR AVAITING CONVERSION

~ GENERAL DATA ~

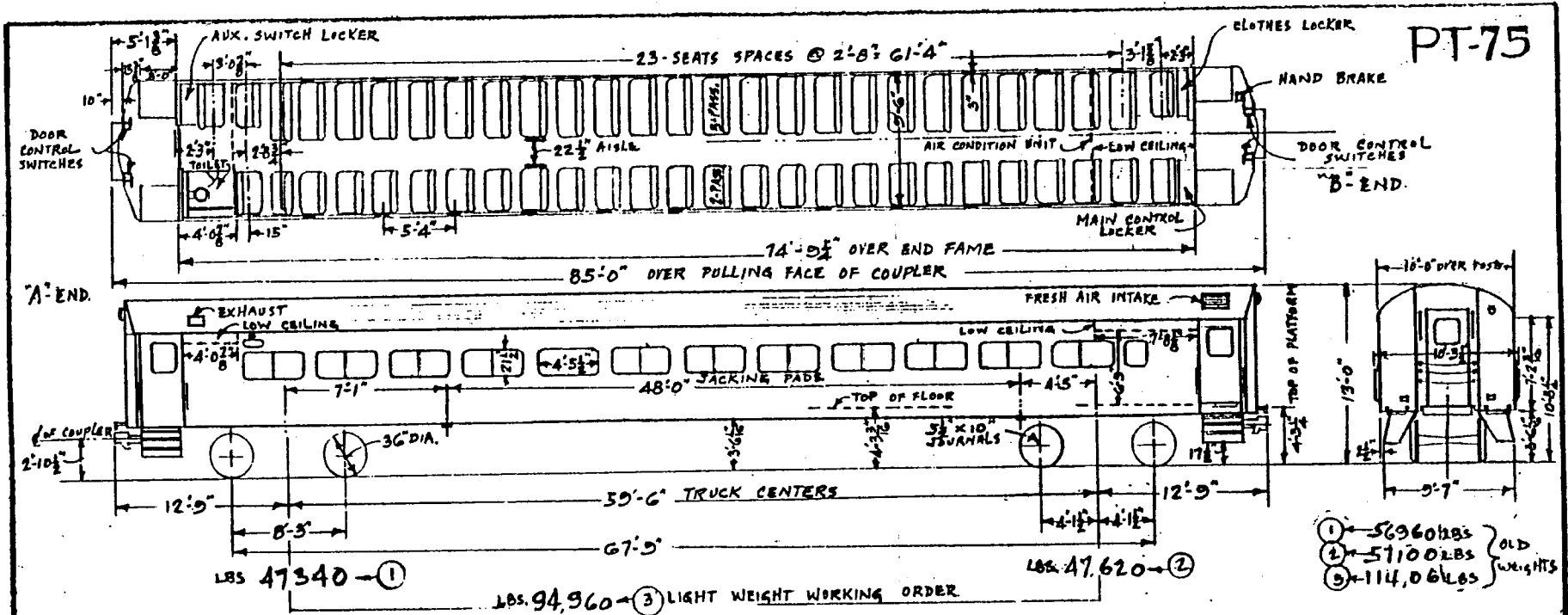
TYPE OF CAR - HEAD END	VOLTAGE & CONT. H.P. OF MOTORS - 325 VOLTS, 100HP CONT.	MAKE & TYPE OF AIR COND EQUIP. - FRIGIDEX, ELEC. MECH. 0-TON.	MAKE & TYPE OF MASTER CONT'L - WEST. XMA-G3
CLASS OF CAR - MP-72c	WEIGHT ONE MOTOR COMPLETE - 2650 LBS.	MAKE & TYPE OF HEATING EQUIP. - RAILWAY UTILITY, STRIP TYPE	MAKE & TYPE OF S.C. EQUIP. - U.S. EL
TYPE OF CONSTRUCTION - WELDED	NO CONTACT SHOES PER TRUCK - 2	MAKE & TYPE OF AC ANTS. EQUIP.	MAKE & TYPE OF HEADLIGHTS - PYLE NAT'L SEA BEAM
CAR NUMBERS - 2501-2522 (SEE NOTE)	NO & SIZE OF BRAKE CYLS. PER TRUCK - 2 CYLS. 10X8"	MAKE & TYPE OF LIGHT FIXTURES - SAFETY, CEILING FLUO	MAKE & TYPE OF MARKER LIGHTS - PYLE NAT'L INC
SEATING CAPY. - 120	MAKE & SCHEDULE OF AIR BRAKES - WEST. A.B. DIZ-MBE	NO & TYPE OF VENTILATORS	MAKE & TYPE OF WHISTLE - W.A.B. TRUMPET TYPE
MANUFACTURER - PULLMAN STANDARD	MAKE & TYPE OF AIR COMPRESSOR - WEST. DBF	NO & TYPE OF WATER COOLERS - NONE	MAKE & TYPE OF WINDOW WIPER - SPRAGUE, AIR FUSH
ORDER NO. - 6062	MAKE & TYPE TR'N BRAKE - ABR. SIMPLEX CLASP	CAPACITY OF DRINKING WATER TANK - NONE	MAKE & TYPE CAPY BATT. - EXIDE, ICELL, 500A. 8 HR.
YEAR BUILT - 1953	MAKE & TYPE OF HAND BRAKE - PEA COCK 1; BOOLE LEVER TYPE	CAPACITY OF WASH WATER TANK - NONE	NO. OF JUMPERS RECEPY. - 12
MIN. RAD. OF CURVE SINGLE CAR - 240'	MAKE & TYPE OF COUPLER - AMER. STL. FODY. MODDY. F"	NO. OF TOILETS - 1	MAKE & TYPE BUS LINE DIS. SW. - GE. 179 M18A1
MIN. RAD. OF CURVE CAR COUPLED	MAKE & TYPE OF SASH - HUNTER CO. STATIONARY	MAKE & TYPE OF LAVATORY - NONE	MAKE & TYPE OF LINE SW. - GE. 173 M8A1
TYPE OF TRUCKS - C.S. EQUALIZER BAR TYPE	OUTSIDE FINISH - HIGH STRENGTH, LOW ALLOY STEEL	MAKE & TYPE OF HOPPER - DUNER, DRY TYPE	MAKE & TYPE OF DOOR CONT'L - NAT'L. PNEU. CDC
WEIGHT OF MOTOR TRUCK COMPLETE - 25200 LBS. 'A'	TYPE & THICKNESS OF INSULTN - FIBERGLASS ULTRALITE 3LB. PER	MAKE & TYPE OF M.G. SET - G.E. 5QM16SA1	MAKE & TYPE OF CONT'L GROUP - GE. TYPE-17K419B1
WEIGHT OF TRAILER TRUCK COMPLETE - 25000 LBS. 'B'	MAKE & TYPE OF SEATS - HAYWOOD WAREFIELD REVERSIBLE TYPE	MAKE & TYPE OF M. ALTERNATOR - G.E.	
MAKE, TYPE & SIZE OF BEARINGS - HYATT, ROLLER, 6X12"	SEAT COVERING - WYANSOTE GREEN	MAKE & TYPE OF U.C. POWER PLANT -	
NO & TYPE OF MOTORS - 4 G.E. 1240	MAKE & TYPE OF WINDOW SHADE - ADAM. & WNST, CABLE TYPE	FUEL TANK CAPY. -	



~ GENERAL DATA ~

TYPE OF CAR - MU	MAKE & TYPE CAPY. BAT. EXIDE, 16 CELL 300A @ HR.	MAKE & TYPE OF AIR COND. EQUIPT. - FRIGIDRE, BLUE HICK 8 TON	* BEING CONVERTED TO:
CLASS OF CAR - MP-72T	No. JUMPER RECEPT - 12	MAKE & TYPE OF HEATING EQUIPT. - RAILWAY UTILITY STRIP T.	CLASS PT-72C SEE PAGE 12
TYPE OF CONSTRUCTION - WELDED	MAKE & TYPE BUS LINE DIS. SW. - GE 17JM9A1	MAKE & TYPE CONT. GROUP TYP. - HUNTER 2 1/2	CLASS PP-72B SEE PAGE 3
CAR NUMBERS - 2602-2674 *	Nº & SIZE OF BRAKE CYL. PER TRUCK - 2 CYL. 10X8	MAKE & TYPE OF LIGHT FIXTURES - SAFETY CEILING FLOOR	CLASS BG-72B SEE PAGE 6
SEATING CAPY. - 123	MAKE & SCHEDULE OF AIR BRAKES - WEST. A.B. D22-TDE	Nº & TYPE OF VENTILATORS	
MANUFACTURER - PULLMAN STANDARD	MAKE & TYPE DOOR CONT. - NAT. PNEU. C.D.C.	Nº & TYPE OF WATER COOLERS - NONE	
ORDER N° - 6963, 6974	MAKE & TYPE TRK. BRAKE - A.S. SIMPLEX CLASP	CAPY. OF DRINKING WATER - NONE	
YEAR BUILT - 1935, 1936	MAKE & TYPE OF HAND BRAKE - PEA COOL. 1200 LB. CAPTY.	CAPY. OF WASH WATER TANK - NONE	
MIN. RAD. OF CURVE SINGLE CAR - 240'	MAKE & TYPE OF COUPLER - AMER. STL. FDY. MOD. FT. 1"	Nº OF TOILETS -	
MIN. RAD. OF CURVE CAR COUPLED	MAKE & TYPE OF SASH - HUNTER CO. STATIONARY	MAKE & TYPE LINE SW. - GE 17JM9A1	
TYPE OF TRUCKS - C.E. EQUALIZER BAR TYPE	OUTSIDE FINISH - HIGH STRENGTH, LOW ALLOY STEEL	MAKE & TYPE OF M.G. SET - GE 56M9 105A1	
WEIGHT OF TRAILER, TRUCK COMPLETE -	TYPE & THICKNESS OF INSULT. W. FIBERGLASS BOARD. 3/8" PER	MAKE & TYPE OF M. ALTERNATOR - GE	
MAKE TYPE & SIZE OF BEARINGS - HOTT AULER 6X11	MAKE & TYPE OF SEATS - HEMPHOOD STATIONARY		
	SEAT COVERING - VINYL		

PT-75

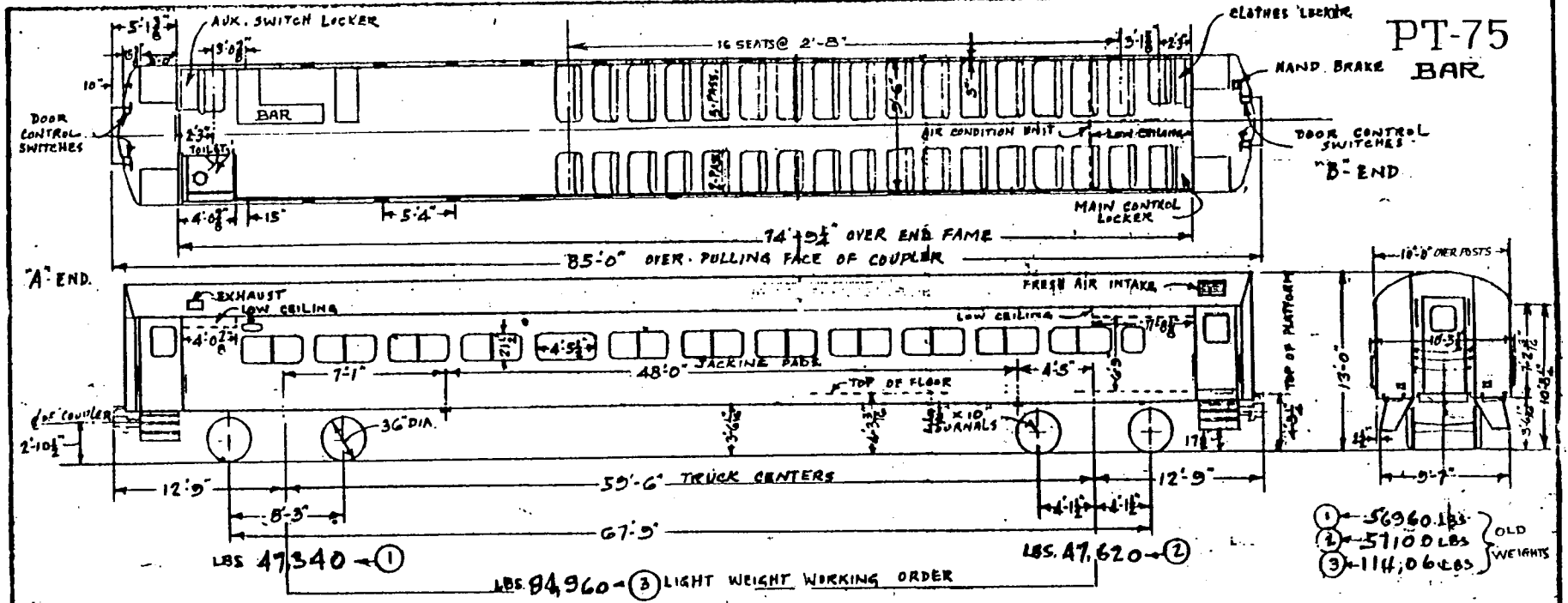


* OLD NO.	2525	2526	2527	2528	2529	2530	2531	2532	2533	2534	2535	2536
NEW NO.	2701	2703	2705	2707	2709	2711	2713	2716	2717	2719	2721	2723

* TOILETS-VAPOR CHEMICAL AFTER CONVERSION

DATA

TYPE OF CAR- Push-Pull CLASS OF CAR- PT75 TYPE OF CONSTRUCTION- WELDED STEEL CAR NUMBERS- * SEATING CAP'Y- 130 MANUFACTURER- PULLMAN STANDARD ORDER N°- 7014-A YEAR BUILT- 1963 MIN. RAD. OF CURVE SINGLE CAR- 240 FT MIN. RAD. OF CURVE CAR COUPLED- 240 FT TYPE OF TRUCKS- CAST STEEL BAR TYPE WEIGHT OF TRAILER TRUCK COMPLETE- MAKE, TYPE & SIZE OF BEARINGS- 3 1/4" X 10" TIMKEN ROLLER	NO & SIZE OF BRAKE CYLS. PER TRUCK- 4-5" DIA MAKE & SCHEDULE OF AIR BRAKES- WABCO. 26 RE MAKE & TYPE TR'K BRAKE- WABCO. UNIT MAKE & TYPE OF HAND BRAKE- PEARCE 800-LE-24 MAKE & TYPE OF COUPLER- AS.F. HIC STL. INTERLOCKING MAKE & TYPE OF SASH- A&W 266 Lexan OUTSIDE FINISH- HIGH STRENGTH STEEL TYPE & THICKNESS OF INSUL'T'N- AUSTIN BACON ULTEALITE- 3" TH. MAKE & TYPE OF SEATS- Heywood Wakefield SEAT COVERING- VINYL PLASTIC	MAKE & TYPE OF AIR COND. EQUIP'T- ELEC. MECB MAKE & TYPE OF HEATING EQUIP'T- VAPOR- ELEC. STR MAKE & TYPE OF A.C. & H'T'G. EQUIP'T- MAKE & TYPE OF LIGHT FIXTURES- TRANSLITE, FLOOR MOUNTED NO & TYPE OF VENTILATORS- SAFETY, 7 1/2" X 12 1/2" - 2-60 NO & TYPE OF WATER COOLERS- CAP'Y OF DRINKING WATER- CAP'Y OF WASH WATER TANK NO OF TOILETS- 1 MAKE & TYPE OF LAVATORY- * MAKE & TYPE OF HOPPER- Chemical flush MAKE & TYPE OF MO. SET- WEST YX-503-A MAKE & TYPE OF M. ALTERNATOR- SAFETY- 3120A-1148 MAKE & TYPE OF U.C. POWER PLANT- FUEL TANK CAP'Y-	MAKE & TYPE OF HEADLIGHTS- E-12385-A MAKE & TYPE OF MARKER LIGHTS- PYLE NATL PLSA-10 MAKE & TYPE OF WHISTLE- WABCO. A-2315 MAKE & TYPE OF WINDOW WIPER- SPRAGUE AIR MAKE & TYPE CAP'Y BATT. - 900 AH. 8 HR. EXIDE NUMBER OF JUMPER RECEPT.- 12 & 6 DUMMY MAKE & TYPE BUS LINE DIS. SW- WEST MAKE & TYPE OF LINE SW.- WEST VPB-53 MAKE & TYPE OF DOOR CONT'L- VAPOR-CRC. CONVERTED TO PUSH-PULL 1973 ** 2705 IS A BAR CAR SEE PAGE 10
--	---	--	---



* OLD NO.	2525	2526	2527	2528	2529	2530	2531	2532	2533	2534	2535	2536
NEW NO.	2701	2703	2705	2707	2709	2711	2713	2716	2717	2718	2721	2723

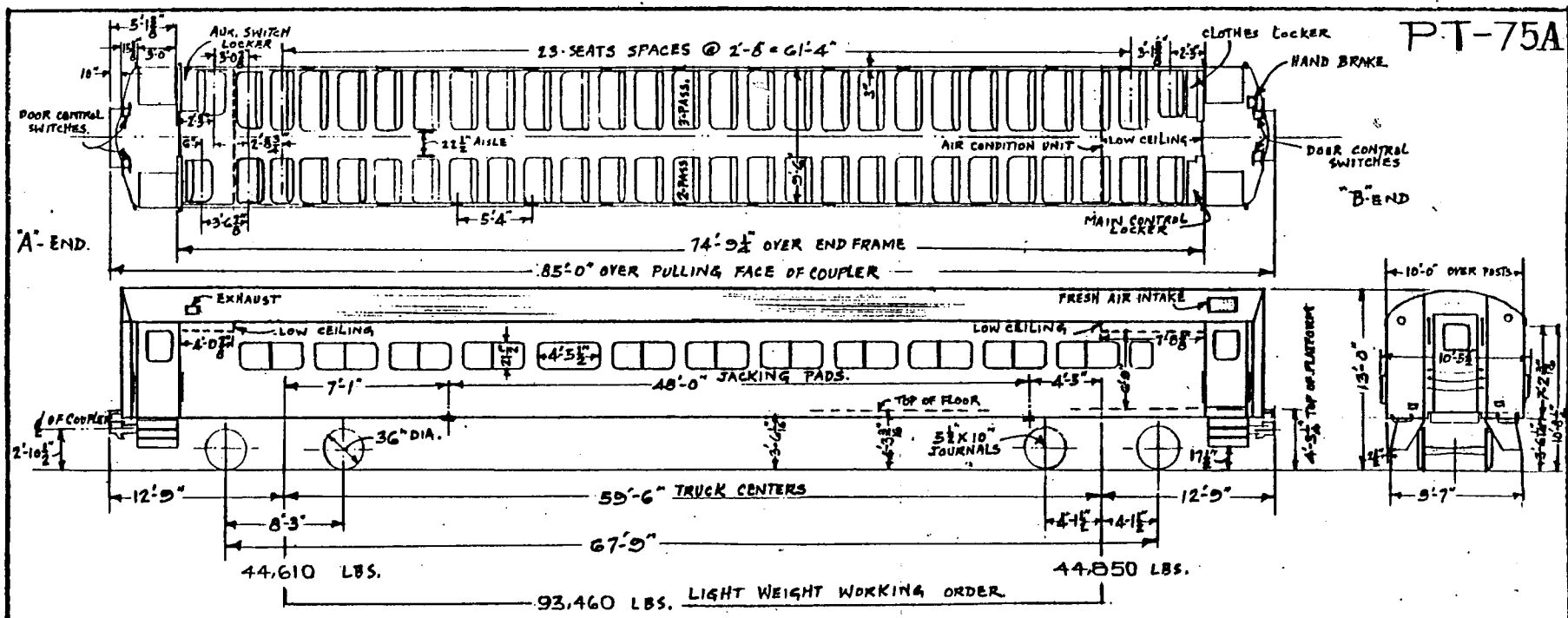
TYPE OF CAR - Push-Pull BAR
 CLASS OF CAR - PT-75
 TYPE OF CONSTRUCTION - WELDED STEEL
 CAR NUMBERS - 2705
 SEATING CAP'Y - 86
 MANUFACTURER - PULLMAN STANDARD
 ORDER NO - 7014-A
 YEAR BUILT - 1963
 MIN. RAD. OF CURVE SINGLE CAR - 240 FT
 MIN. RAD. OF CURVE CAR COUPLED - 240 FT
 TYPE OF TRUCKS - CAST STEEL, BAR TYPE
 WEIGHT OF TRAILER TRUCK COMPLETE -
 MAKE, TYPE & SIZE OF BEARINGS - TIMKEN BALLER 5 1/2" x 10"

NO & SIZE OF WRAKE CYLS. PER TRUCK - 4-5" DIA
 MAKE & SCHEDULE OF AIR BRAKES - WABCO. 26 RE
 MAKE & TYPE TRUX BEAKE - WABCO. DNIT
 MAKE & TYPE OF HAND BRAKE - Peacock 800-LE-24
 MAKE & TYPE OF COUPLER - A&F HIC STL. INTERLOCKING
 MAKE & TYPE OF SASH - A&N CG. Lexan
 OUTSIDE FINISH - HIGH STRENGTH STEEL
 TYPE & THICKNESS OF INSUL'T IN - ALUMITE - 3" TH
 MAKE & TYPE OF SEATS - HAYWOOD WAKEFIELD
 SEAT COVERING - VINYL PLASTIC

MAKE & TYPE OF AIR COND. EQUIP'T - Elec. Mech
 MAKE & TYPE OF HEATING EQUIP'T - Vapor. Elec. Str
 MAKE & TYPE OF A.C. & H.T.D. EQUIP -
 MAKE & TYPE OF LIGHT FIXTURES - TRANSLITE FLOORS
 NO & TYPE OF VENTILATORS - SAFETY, TAKM 52-72-2
 NO & TYPE OF WATER COOLERS -
 CAP'Y OF DRINKING WATER -
 CAP'Y OF WASH WATER TANK -
 NO OF TOILETS - 1
 MAKE & TYPE OF LAVATORY - HOPPER
 MAKE & TYPE OF HOPPER - Chemical. Finish
 MAKE & TYPE OF HO. SET - WEST. YX-503-A
 MAKE & TYPE OF ALTERNATOR - ONLEY-3223041424
 MAKE & TYPE OF U.C. POWER PLANT -
 FUEL TANK CAP'Y -

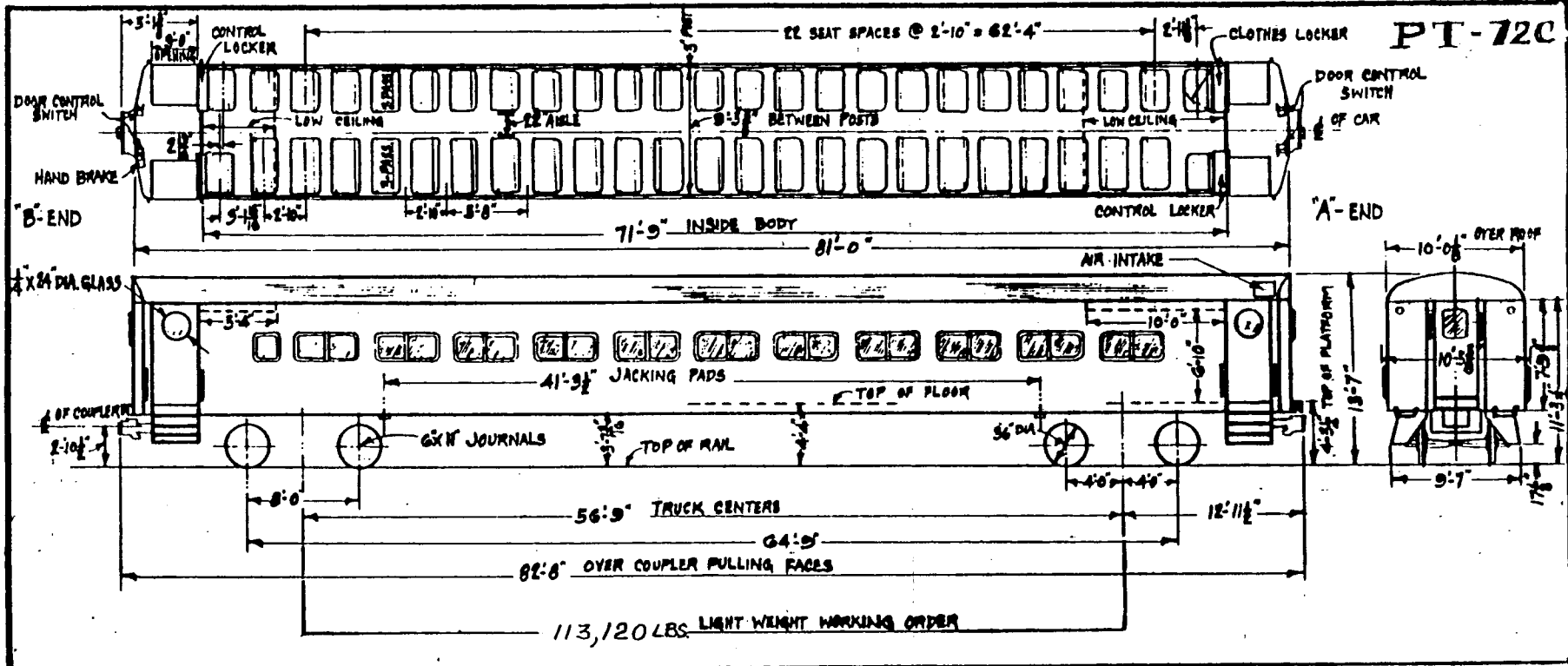
MAKE & TYPE OF HEADLIGHTS - E-4205-R
 MAKE & TYPE OF MARKER LIGHTS - PYLE NATL
 MAKE & TYPE OF WHISTLE - WABCO. A-21213
 MAKE & TYPE OF WINDOW WIPER - SPRAGUE AIR
 MAKE & TYPE CAP'Y BATT. - 300 AM. 8 N.R.
 NUMBER OF JUMPER RECEP'T. - 12 & 6 dummy
 MAKE & TYPE BUS LINE DIS. SW. - WEST.
 MAKE & TYPE OF LINE SW. - WEST. UPB-53
 MAKE & TYPE OF DOOR CONT'L - VAPOR. C.D.C.
 CONVERTED TO PUSH PULL - 1973

P.T-75A



~ GENERAL DATA ~

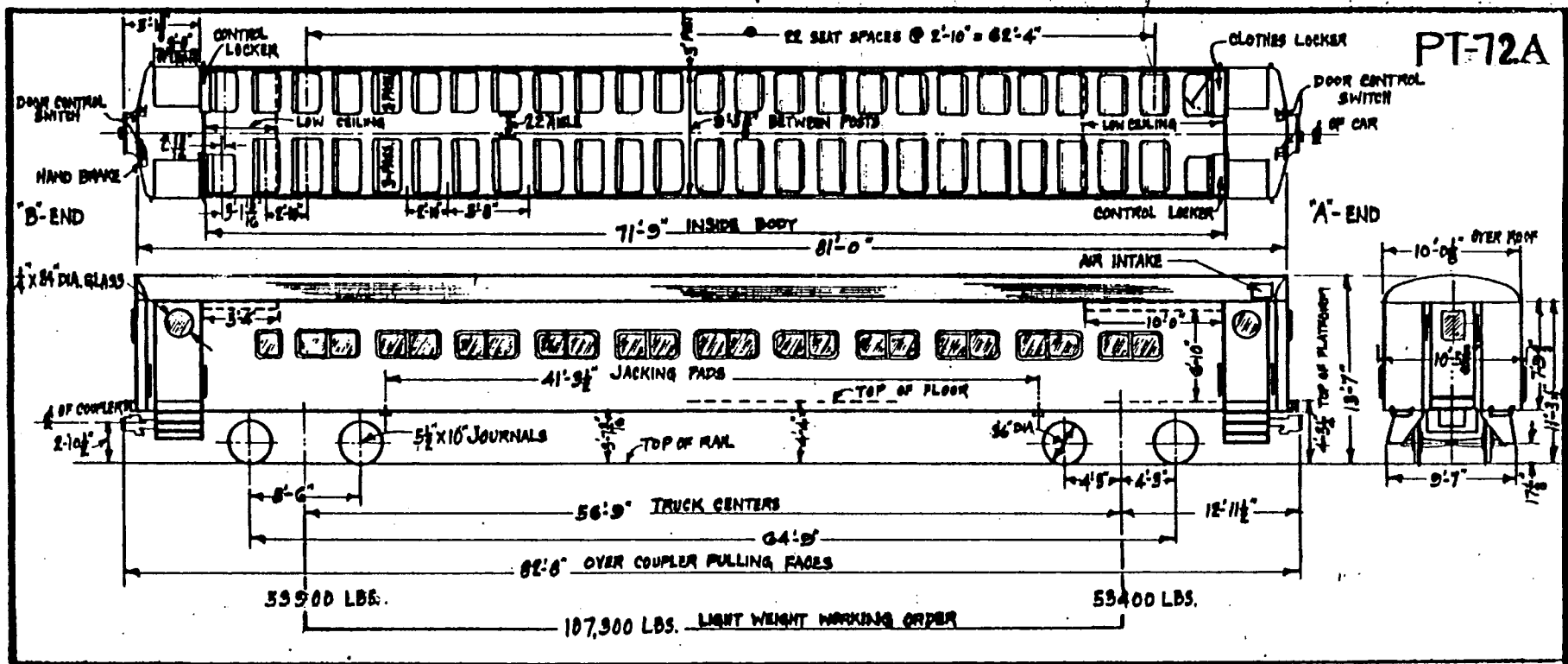
TYPE OF CAR - PUSH-PULL	VOLT & CONT. H.P. OF MOTORS -	MAKE & TYPE OF AIR COND. EQUIP'T. - SAFETY 305	MAKE & TYPE OF MASTER CONT'L -
CLASS OF CAR - PT-75A	WEIGHT OF ONE MOTOR COMPLETE -	MAKE & TYPE OF HEATING EQUIP'T. - VAPR, ELEC. STRIP	MAKE & TYPE OF S.C. EQUIP'T. -
TYPE OF CONSTRUCTION - WELDED STEEL	NO. OF CONTACT SHOES PER TRUCK -	MAKE & TYPE OF A.C. & H.P. EQUIP. - TRANS-LITE	MAKE & TYPE OF HEADLIGHTS -
CAR NUMBERS - 2702-2736 EVEN NOS. ONLY	NO. & SIZE OF BRAKE CYLS. PER TRUCK - 4-5" DIA.	MAKE & TYPE OF LIGHT FIXTURES - FLUORESCENT	MAKE & TYPE OF MARKER LIGHTS -
SEATING CAP'Y - 133	MAKE & SCHEDULE OF AIR BRAKES - WABCO, 2G-CE	NO. & TYPE OF VENTILATORS - SAFETY, TEXM 52-126	MAKE & TYPE OF WHISTLE -
MANUFACTURER - PULLMAN STANDARD	MAKE & TYPE OF AIR COMPRESSOR - WABCO, D-3-F	NO. & TYPE OF WATER COOLERS -	MAKE & TYPE OF WINDOW WIPER -
ORDER NO. - 7014	MAKE & TYPE TR'K BRAKE - WABCO, UNIT	CAP'Y OF DRINKING WATER -	MAKE & TYPE CAP'Y BATT. - 200AH @ 24V D.C.
YEAR BUILT - 1963	MAKE & TYPE OF HAND BRAKE - PEACOCK, 800-LE-24	CAP'Y OF WASH WATER TANK -	NUMBER OF JUMPER RECEPT. - 12 @ 16 DYNAMIC
MIN. RAD. OF CURVE SINGLE CAR - 240 FT	MAKE & TYPE OF COUPLER - ASF, NYC, STL INTERLOCKING	NO. OF TOILETS -	MAKE & TYPE BUS LINE DIS. SN. - WEST
MIN. RAD. OF CURVE CAR COUPLED - 240 FT	MAKE & TYPE OF SASH - A4W *GG, DOUBLE GLAZED	MAKE & TYPE OF LAVATORY -	MAKE & TYPE OF LINE SN. - WEST
TYPE OF TRUCKS - CAST STEEL BAR TYPE	OUTSIDE FINISH - HIGH STRENGTH STEEL	MAKE & TYPE OF HOPPER -	MAKE & TYPE OF DOOR CONT'L - VATOR, C.D.C.
WEIGHT OF MOTOR TRUCK COMPLETE -	TYPE & THICKNESS OF INSUL'T'N - GUSTIN BACON ULTRALITE 2-3/4"	MAKE & TYPE OF HO SET - WEST YX-503-A	MAKE & TYPE OF CONT'L GROUP - WEST
WEIGHT OF TRAILER TRUCK COMPLETE -	MAKE & TYPE OF SEATS - HEYWARD WARE, Padded	MAKE & TYPE OF M. ALTERNATOR - SAFETY ELEC. 24	MAKE & TYPE OF CONT'L GROUP - WEST
MAKE, TYPE & SIZE OF BEARINGS - TIERZEN KOLLER 3 1/2" X 10"	SEAT COVERING - VINYL PLASTIC	MAKE & TYPE OF U.C. POWER PLANT -	MAKE & TYPE OF CONT'L GROUP - WEST
I.C. & TYPE OF MOTORS -	MAKE & TYPE OF WINDOW SHADE -	FUEL TANK CAP'Y -	



~ GENERAL DATA ~

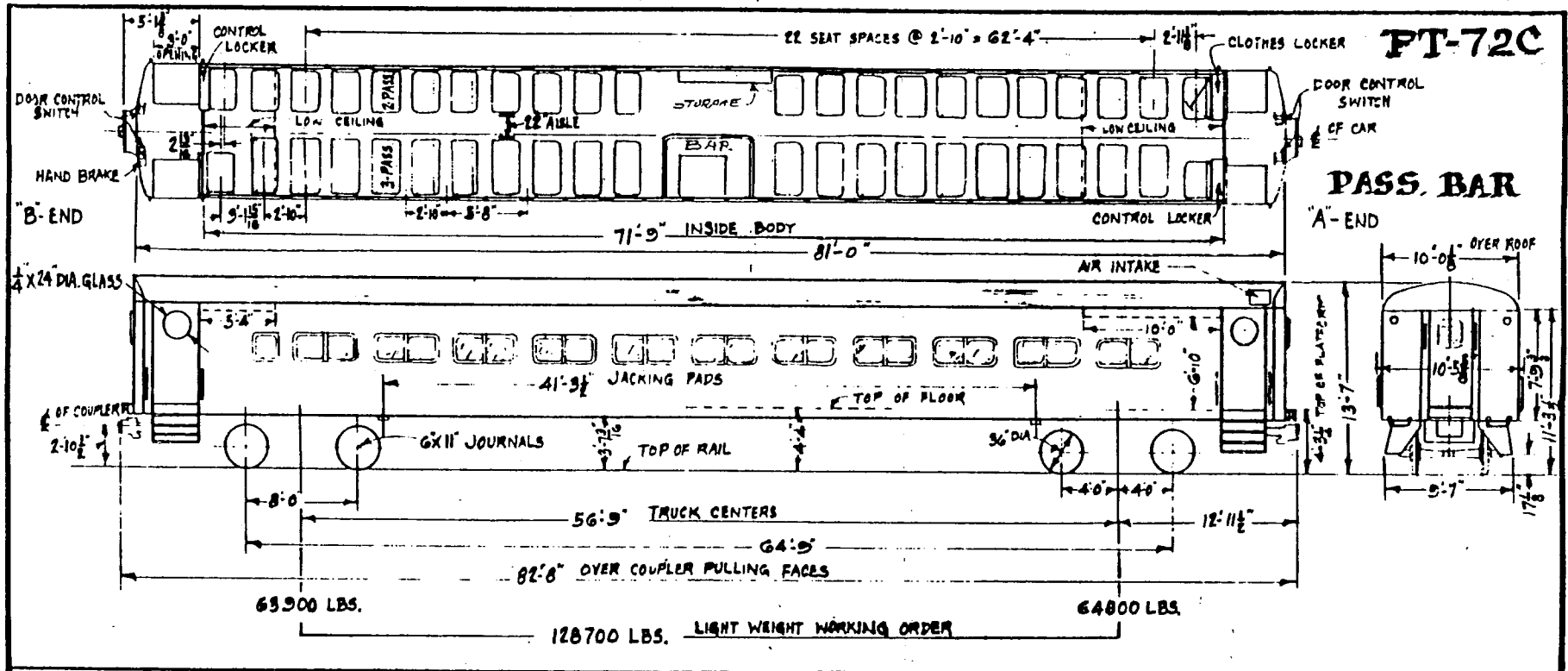
TYPE OF CAR - PUSH-PULL	MAKE & TYPE CAPY. BAT-EXIDE, 16 CELL 300A 9 HR	MAKE & TYPE OF AIR COND. - QUIP T-FRIAD RE. BLK. MCH. 8 TON	NOTE: CAR NO'S. 2792, 2794, 2796
CLASS OF CAR - PT-72 C	NO. JUMPER RECEP'T - 1, 4, 12, 27	MAKE & TYPE OF HEATING EQUIP'T - RAILWAY UTILITY, STRIP T.	2846 TO 2898 EVEN NO'S.
TYPE OF CONSTRUCTION - WELDED	MAKE & TYPE BUS LINE DIS. SW. - GE 17JM9A1	MAKE & TYPE CONT. GROUP TYP. - HESLER 31	CAR NOS 2890, 2892 & 2894
CAR NUMBERS - (SEE NOTE)	Nº & SIZE OF BRAKE CYLS. FOR TRUCK - 2 CYS 10X8	MAKE & TYPE OF LIGHT FIXTURES - SAFETY CEILING FLOA	ARE BAR CARS - SEE PAGE 14
SEATING CAPY - 123	MAKE & SCHEDULE OF AIR BRAKES - WESTAB D22 TDR	Nº & TYPE OF VENTILATORS	
MANUFACTURER - PULLMAN STANDARD	MAKE & TYPE DOOR CONT. - NAT. PNEU. C.D.C.	Nº & TYPE OF WATER COOLERS - NONE	
ORDER Nº - 6963, 6974	MAKE & TYPE TRK BRAKE - A 92 SIMPLEX CLASP	CAPY. OF DRINKING WATER - NONE	
YEAR BUILT - 1935, 1936	MAKE & TYPE OF HAND BRAKE - FEACOR, 1800 LB CAPTY	CAPY. OF WASH WATER TANK - NONE	
MIN. RAD. OF CURVE SINGLE CAR - 240'	MAKE & TYPE OF COUPLER - AMER STI. FBY MOFF T	Nº OF TOILETS - ODD NO'S, 1 EVEN NO'S NONE	
MIN. RAD. OF CURVE CAR COUPLED	MAKE & TYPE OF SASH - HUNTER CO STATIONARY	MAKE & TYPE LINE SW. - GE 17JM9A1	
TYPE OF TRUCKS - C&E EQUALIZER BAR TYPE	OUTSIDE FINISH - HIGH STRENGTH LOW ALLOY STEEL		
CONVERTED TO PUSH-PULL 1975	TYPE & THICKNESS OF INSUL'TN - FIBERGLASS BOARD 1 1/2 IN		
WEIGHT OF TRAILER TRUCK COMPLETE	MAKE & TYPE OF SEATS METHODOD - STATIONARY		
MAKE TYPE & SIZE OF BEARINGS - HATTALLOR 6X11	SEAT COVERING VINYL		

PT-72A



~ GENERAL DATA ~

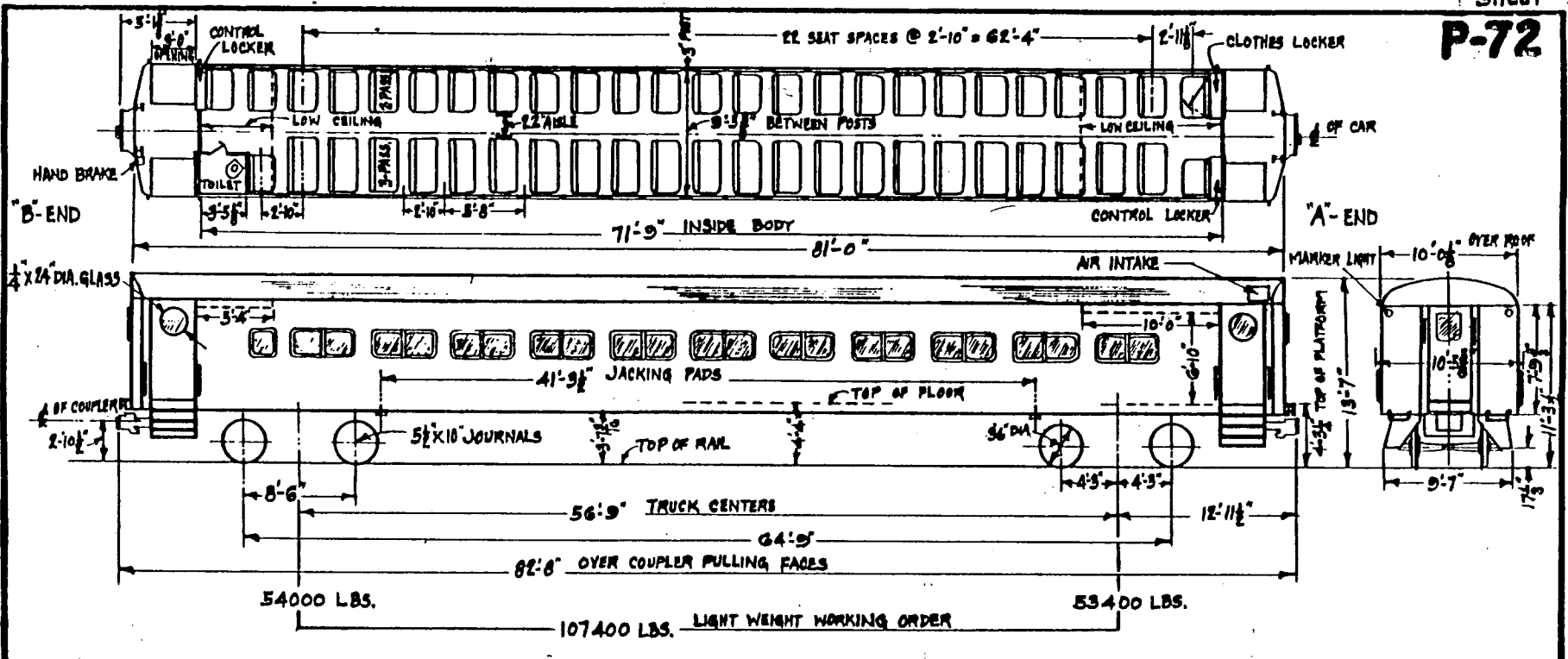
TYPE OF CAR - PUSH PULL	MAKE & TYPE OF AIR COND. EQUIP - FRIG'DRL ELEC. MECH. BTH	MAKE & TYPE OF MASTER CONT'L - NONE
CLASS OF CAR - PT-72A	MAKE & TYPE OF HEATING EQUIP - RAILWAY UTILITY STRIP	MAKE & TYPE OF S.G. EQUIP - NONE
TYPE OF CONSTRUCTION - WELDED	MAKE & TYPE OF LIGHT FIXTURES - SAFETY, CEILING, FLDG.	MAKE & TYPE OF HEADLIGHT - NONE
CAR NUMBERS - 2801-2844	NO. & TYPE OF VENTILATORS	MAKE & TYPE OF MARKER LIGHTS - NONE
SEATING CAPY - 118 & 123 (SEE NOTE)	NO. & TYPE OF WATER COOLERS - NONE	MAKE & TYPE OF WHISTLE - NONE
MANUFACTURER - PULLMAN STANDARD	CAPY OF DRINKING WATER - NONE	MAKE & TYPE OF WINDOW WIPER - NONE
ORDER NO - 6904, 6975	CAPY OF WASH WATER TANK - NONE	MAKE & TYPE CAPY. BATT. EXIDE 16 CELL 500 A. 8 HR.
YEAR BUILT - 1953	NO. OF TOILETS - 1	NUMBER OF JUMPER RECEPT - 12
MIN. RAD OF CURVE SINGLE CAR - 240	MAKE & TYPE TOILET - WALTON CHEMICAL	MAKE & TYPE BUS LINE DIS SW GE 176M19A1
MIN. RAD OF CURVE CAR COUPLED	MAKE & TYPE OF M.G. SET - GE - 56 MG 165A1	MAKE & TYPE LINE SW - GE. 17. M 9A1
TYPE OF TRUCK C.S. EQUALIZER BAR TYPE	MAKE & TYPE OF M. ALTERNATOR - GE	MAKE & TYPE OF DOOR CONT'L - NAT'L PNEU. ADC
WEIGHT OF MOTOR TRUCK COMPLETE -	MAKE & TYPE OF U.C. POWER PLANT - NONE	
WEIGHT OF TRAILER TRUCK COMPLETE - 17500 LBS	FULL TANK CAPY - NONE	
MAKE, TYPE & SIZE OF BEARING - HYATT, ROLLER, 5 1/2" x 10"		
NO. & TYPE OF MOTORS - NONE		



~ GENERAL DATA ~

TYPE OF CAR - PASSENGER BAR		MAKE & TYPE OF AIR COND. EQUIP'T - FRIGORE, BLEC, MECH B TON	
CLASS OF CAR - PT 72C		MAKE & TYPE OF HEATING EQUIP'T - RAILWAY UTILITY, STRIP T	
TYPE OF CONSTRUCTION - WELDED			
CAR NUMBERS - 2890, 2892, 2894	Nº & SIZE OF BRAKE CYL. PER TRUCK - 2 CYLS 10x8	MAKE & TYPE OF LIGHT FIXTURES - SAFETY CEILING FLUO	MAKE & TYPE OF MARKER LIGHTS - 4
SEATING CAP'Y - *	MAKE & SCHEDULE OF AIR BRAKES - WEST. AB DZZ TDE	Nº & TYPE OF VENTILATORS	
MANUFACTURER - PULLMAN STANDARD		Nº & TYPE OF WATER COOLERS - NONE	
ORDER N° - 6963 6974	MAKE & TYPE TRK BRAKE - ASE SIMPLEX CLASP	CAP'Y OF DRINKING WATER - NONE	MAKE & TYPE CAP'Y BATT - EXIDE 16 CELL 300A 8 HR
YEAR BUILT - 1955, 1956	MAKE & TYPE OF HAND BRAKE - PEACOCK 1800 LB WT	CAP'Y OF WASH WATER TANK - NONE	NUMBER OF JUMPER RECEPT - 12
MIN. RAD. OF CURVE SINGLE CAR - 240'	MAKE & TYPE OF COUPLER - AMER STL FOT MOD FT 5"	Nº OF TOILETS - NONE	MAKE & TYPE BUS LINE DIS. SW - GE ITGM 19A1
MIN. RAD. OF CURVE CAR COUPLED	MAKE & TYPE OF SASH - HUNTER CO STATIONARY		MAKE & TYPE LINE SW - GE 17J M9A1
TYPE OF TRUCKS - CS. EQUALIZER BAR TYPE	OUTSIDE FINISH - HIGH STRENGTH LOW ALLOY STEEL		MAKE & TYPE OF DOOR CONT'L - NAT'L FNEUC B C
WEIGHT OF TRAILER TRUCK COMPLETE -	TYPE & THICKNESS OF INSULT'N - FIBERGLASS W/MAST 3/8" ON	MAKE & TYPE OF M/G SET - GE 56 M/G 165A1	* No. OF SEAT'S
MAKE, TYPE & SIZE OF BEARINGS - WATT MILLER 6X11	MAKE & TYPE OF SEATS - HEYWOOD STATIONARY		CAR No.
	SEAT COVERING - VINYL		83
			69
			98
			2890
			2892
			2894

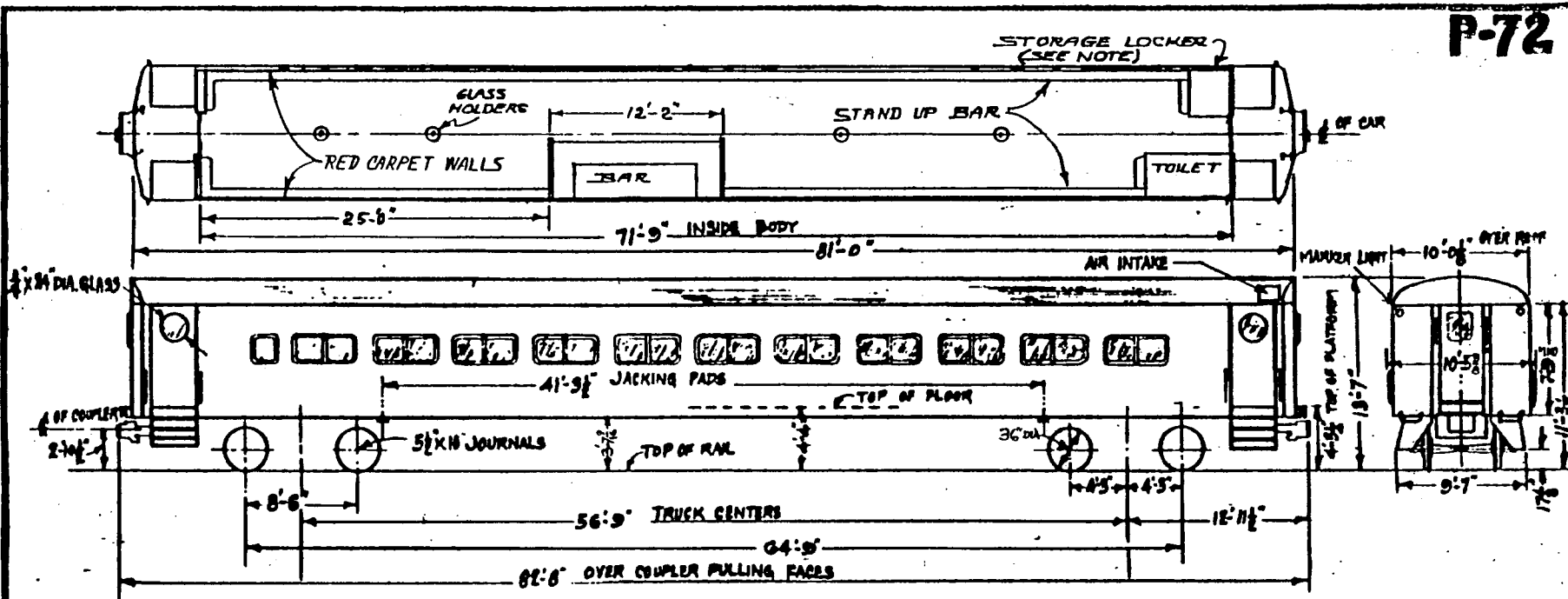
P-72



~ GENERAL DATA ~

TYPE OF CAR - LOCO. HAULED		MAKE & TYPE OF AIR COND. EQUIPT. - FRIG'D RE. ELEC. MECH. 8-TON	
CLASS OF CAR - P-72		MAKE & TYPE OF HEATING EQUIPT. - VAPOR HEAT, UNIZONE	
TYPE OF CONSTRUCTION - WELDED		MAKE & TYPE OF AIR & HTG. EQUIPT.	
CAR NUMBERS - 2901-2980 (SEE NOTE)	NO. & SIZE OF BRAKE CYLS PER TRUCK - 8 CYLS	MAKE & TYPE OF LIGHT FIXTURES - SAFETY, CEILING FLUOR	MAKE & TYPE OF MARKER LIGHTS - PYLE NATL. INC.
SEATING CAP'Y - 120	MAKE & SCHEDULE OF AIR BRAKES - WEST. A.B. D 22-TDE	NO. & TYPE OF VENTILATORS - 1 EXHAUST, 2 INTAKE	
MANUFACTURER - PULLMAN - STANDARD	MAKE & TYPE TANK BRAKE - A.S.F. SIMPLEX, CLASP	NO. & TYPE OF WATER COOLERS - 1 AJAX CON. WCB2742	
ORDER NO. - 6961, 6973	MAKE & TYPE OF HAND BRAKE - PEA COCK 1; BOOLE LEVER TP.	CAPACITY OF DRINKING WATER TANK -	MAKE & TYPE CAP'Y. BATT. - KW. TYPE MAX. 172A. BHR
YEAR BUILT - 1935, 1936	MAKE & TYPE OF COUPLER - AMER. STL. F.D.Y. MOD'FY. "F"	CAPACITY OF WASH WATER TANK -	NO. OF JUMPER RECEPT. - 2
MIN. RAD. OF CURVE SINGLE CAR - 240'	MAKE & TYPE OF SASH - HUNTER CO. STATIONARY	NO. OF TOILETS - 1 (ODD NO. CARS)	NOTE:
MIN. RAD. OF CURVE CAR COUPLED -	OUTSIDE FINISH - HIGH STRENGTH, LOW ALLOY STEEL	MAKE & TYPE OF LAYATORY - CRANE CORNER TYPE	SEE PAGE 16 FOR THE FOLLOWING CARS:
TYPE OF TRUCKS - C.S. EQUALIZER BAR TYPE	TYPE & THICKNESS OF INSULTN. - FIBERGLASS, UTRALITE 3 LB. DEN.	MAKE & TYPE OF HOPPER - DINER #309 FLUSH TYPE	CAR NO'S 2905 & 2970.
WEIGHT OF TRUCK COMPLETE -	MAKE & TYPE OF SEATS - HEYWOOD WAREFIELD, REVERSIBLE TYPE		WERE CONVERTED TO BAR
MAKE, TYPE & SIZE OF BEARINGS - HYATT, ROLLER, 5 1/2" X 10"	SEATING COVERING - WYANSOTE GREEN	MAKE & TYPE OF U.C. POWER PLANT - GM MODEL 80960	CARS. WITH ELECTRIC HEAT 1975
	MAKE & TYPE OF WINDOW SHADE - ADAM & WEST, CABLE TYPE	FUEL TANK CAP'Y. - 150 GAL.	2990 WAS 2970 2991 WAS 2905
			2992 WAS 2957

P-72



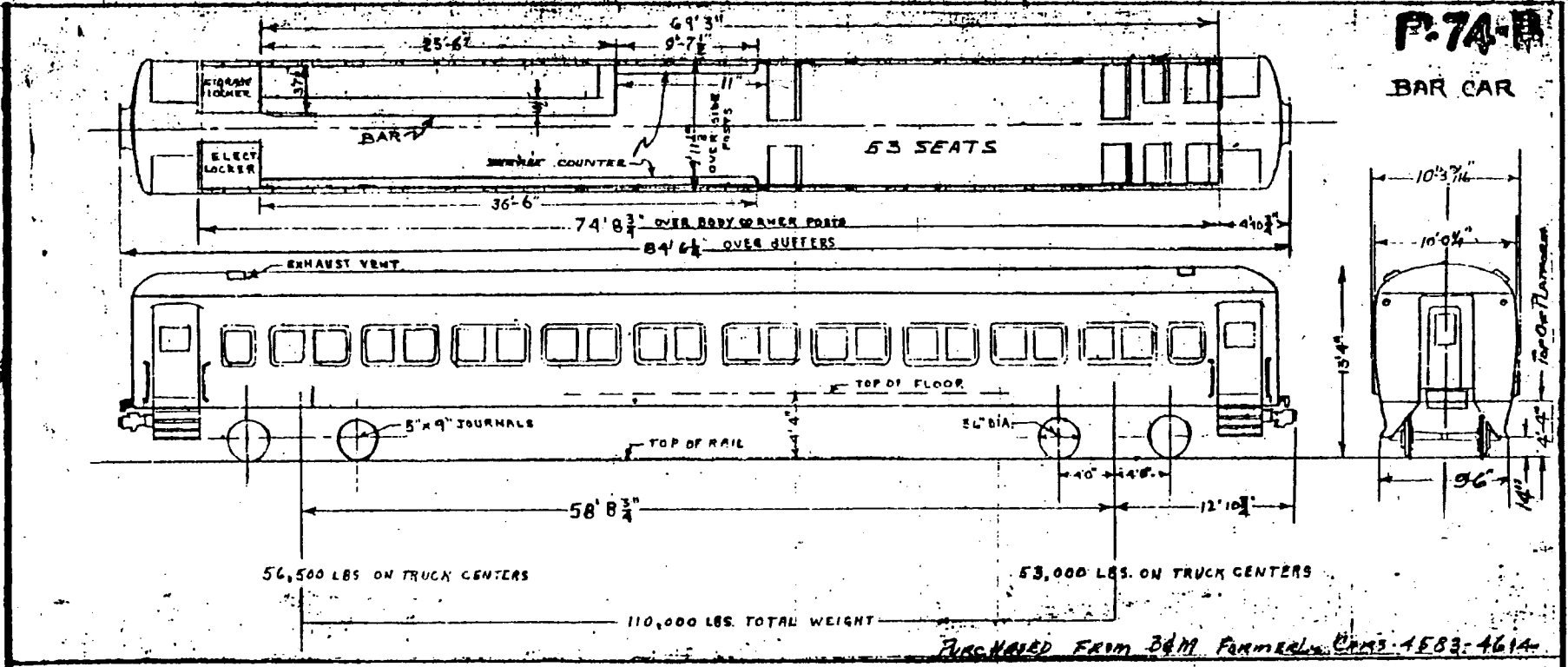
NOTE:
THE TOILET & LOCKER ARRANGEMENT
IS REVERSED ON CAR NO. 2990.
CAR NO. 2991 SHOWN

~ GENERAL DATA ~

TYPE OF CAR - BAR CAR	INSIDE FINISH - RED CARPET WALLS AND FLOOR	MAKE & TYPE OF AIR COND. EQUIP. - FRIEDRICH REC. MFG. 8-TON	
CLASS OF CAR - P-72		MAKE & TYPE OF HEATING EQUIP. - ELECTRIC	
TYPE OF CONSTRUCTION - WELDED			
CAR NUMBERS - 2990, 2991, 2992	NO. & SIZE OF BRAKE CYLS PER TRUCK - 2CYLS	MAKE & TYPE OF LIGHT FIXTURES - SAFETY, CEILING FLOOR	MAKE & TYPE OF MARKER LIGHTS - PYLE NATL. MFG.
SEATING CAP'Y - NO SEATS	MAKE & SCHEDULE OF AIR BRAKES - WEST. A.B. 82-TDE	NO. & TYPE OF VENTILATORS - 1 EXHAUST, 2 INTAKE	
MANUFACTURER - POLLMAN STANDARD	MAKE & TYPE TAX BRAKE - A.S.F. SIMPLEX, CLASP	CAPACITY OF DRINKING WATER TANK -	MAKE & TYPE CAPY. BATT. - KW, TYPE MAX. 1720. 60A
ORDER NO. - 6961, 6973	MAKE & TYPE OF HAND BRAKE - PRA COCK 1; BOOLE LIGHT TP.	CAPACITY OF WASH WATER TANK - 60 GALS.	NO. OF JUMPER RECEPT. - 2
YEAR REBUILT - 1975	MAKE & TYPE OF COUPLER - AMER. STL. F.D.Y. MOD'Y "F"	NO. OF TOILETS - 1 (MICROPHOR)	
MIN. RAD. OF CURVE SINGLE CAR - 240'	MAKE & TYPE OF SASH - HUNTER CO. STATIONARY		
MIN. RAD. OF CURVE CAR COUPLED -	OUTSIDE FINISH - HIGH STRENGTH, LOW ALLOY STEEL		
TYPE OF TRUCKS - C.S. EQUALIZER BAR TYPE	TYPE & THICKNESS OF INSULTN - FIBERGLASS, 2" RALITE 3LADEN		
HEIGHT OF TRUCK COMPLETE -	MAKE & TYPE OF SEATS - NONE		
MAKE, TYPE & SIZE OF BEARINGS - HYATT, ROLLER 8 1/2" X 10"	MAKE & TYPE OF WINDOW SHADE - NONE	MAKE & TYPE OF U.S. POWER PLANT - GM MODEL 80920	
		FUEL TANK CAPY. - 150 GALS.	
			OLD CAR No. NEW No.
			2970 2990
			2905 2991
			2957 2992

P-74-B

BAR CAR



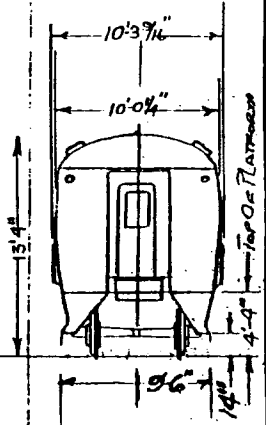
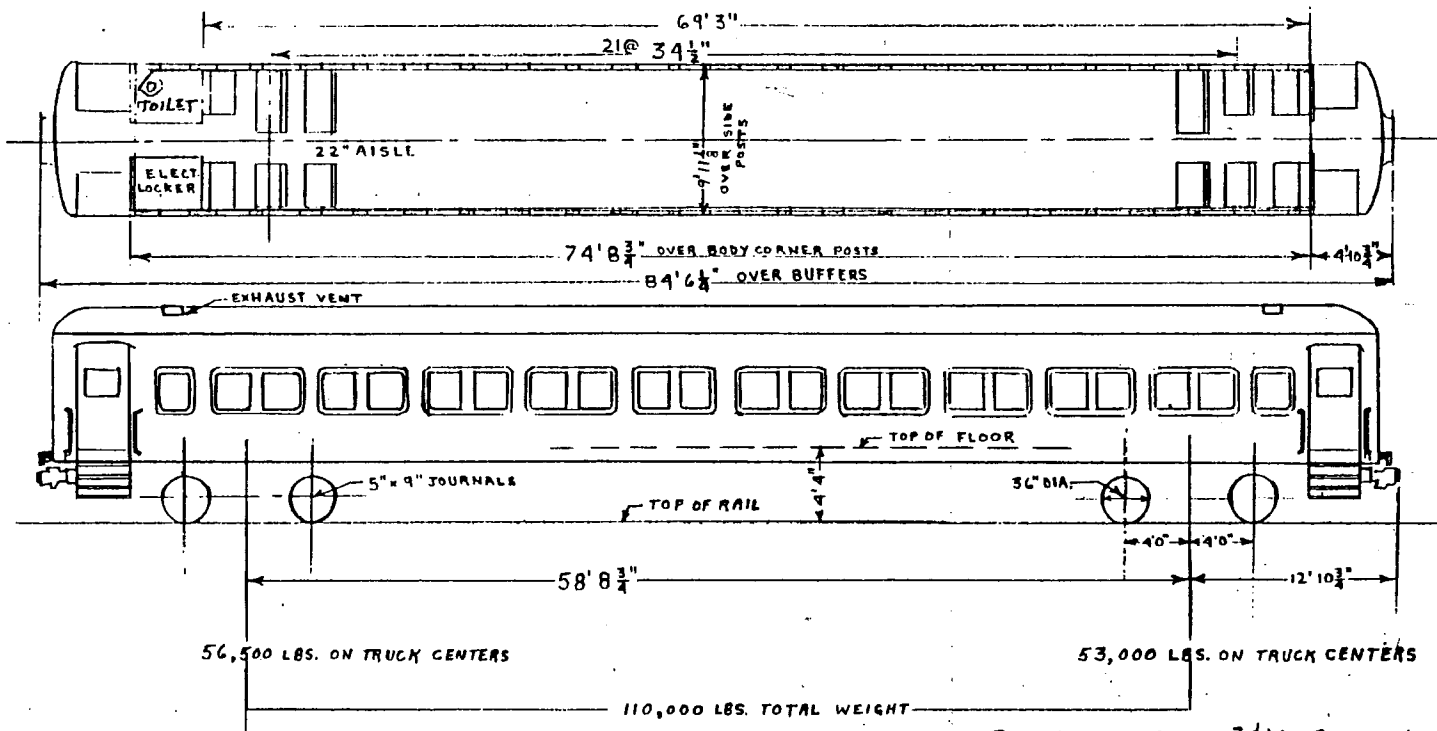
56,500 LBS ON TRUCK CENTERS
 53,000 LBS. ON TRUCK CENTERS
 110,000 LBS. TOTAL WEIGHT

PURCHASED FROM B&M FORMERLY CARS 4583-4614

GENERAL DATA

		LIGHT FIX. SAFETY BULB & FLUORESCENT	CAR No.	SEATING CAP.
TYPE OF CAR	Loco.-hauled	VENTILATORS: 1 EX, 2 INTAKE	7522	4
CLASS OF CAR	P-74-B	TOILETS: 0	7523	0
TYPE OF CONSTRUCTION	Riv. & welded	LAVATORY: 0	7524	1
CAR NUMBERS	SEE CHART	HOPPER: 0	7525	0
SEATING CAP'Y.	SEE CHART	U.C. POWER PLANT: G.M. - 30060	*7527	53
MANUFACTURER	PULLMAN STANDARD	FUEL TANK CAP'Y. 150 GAL.	7530	0
ORDER NO.		MARKER LIGHTS: L.J.R.E.	7531	0
YEAR BUILT	1935 - 1937	BATTERY: EX. - K.W., 180 A.H.	7544	0
MIN. RAD. OF CURVE SINGLE CAR	250'	NO. OF JUMPER RECEPT. 2	7542	0
MIN. RAD. OF SGL CAR COUPLED	288'		7543	0
TYPE OF TRUCKS	G. S. C. SINGLE &		7544	4
WT. OF TRUCK COMPLETE	22,000		7550	4
BEARINGS	A.A.R. JOURN. 5"X9 FRICTION			
				* 53 SEAT DIAGRAM SHOWN

P-74-B



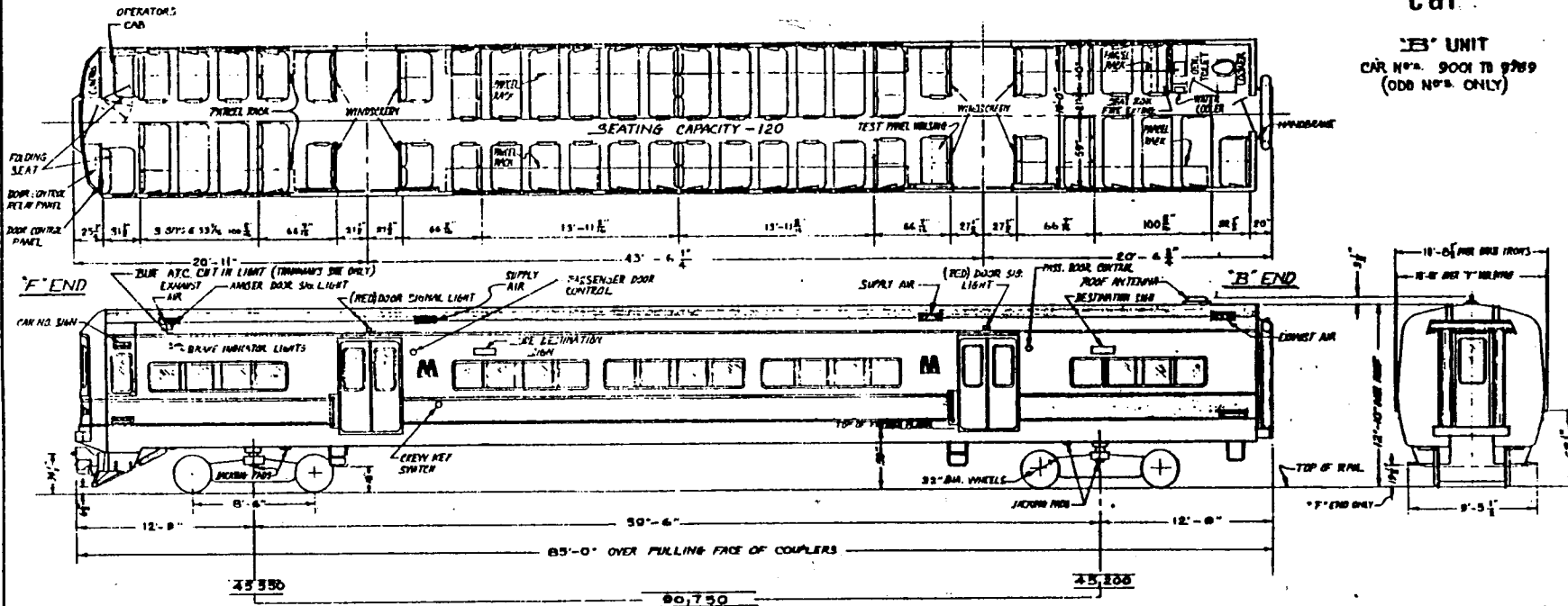
PURCHASED FROM B&M FORMERLY CARS-4583-461A

GENERAL DATA

TYPE OF CAR: LOCO. HAULED		MAKE & TYPE OF A.C. EQUIP.: ^{CARRIER} FRIGIDAIRE	
CLASS OF CAR: P-74-B		MAKE & TYPE HEATING EQUIP.: VAPOR HEAT.	
TYPE OF CONSTRUCTION: RIVETED & WELDED		MAKE & TYPE LIGHT FIXTS.: SAFETY BULB ^{BULB}	MAKE & TYPE MARKER LIGHTS: L. I. R. R.
CAR NUMBERS: *	NO. & SIZE OF BRAKE CYL'S: 2 PER TRK: 8"	NO. & TYPE VENTILATORS: 1 EX, 2 INTAKE	
SEATING CAP'Y: 117	MAKE & SCHEDULE OF AIR BRAKES: A.S.F.	NO. & TYPE WATER COOLERS: (1) ^{PULLMAN} BRADLEY	
MANUFACTURER: PULLMAN-STANDARD	U.C.B.D. - N.Y.A.B.CO.	CAP'Y DRINKING WATER TANK:	MAKE & TYPE CAP'Y BATT. EX-K.W. 100 AH
ORDER NO.:	MAKE & TYPE TRK BRAKE: A.S.F. CLASP	CAP'Y OF WASH WATER TANK: 120 GAL.	NO. OF JUMPER RECEPT.: 2
YEAR BUILT: 1935-1937	MAKE & TYPE HAND BRAKE: MINER DROP	NO. TOILETS: (1)	* CAR No's:
MIN. CURVE RAD.: SINGLE CAR 250'	MAKE & TYPE OF COUPLER: A.S.F. TYPE-Z	MAKE & TYPE LAVATORY: CRANE-WALL	7526, 7533 TO 7541
MIN. CURVE RAD.: COUPLED 288'	MAKE & TYPE OF SASH: DOUBLE I.P.G.	MAKE & TYPE HOPPER: FLUSH TYPE	7545 TO 7549
TYPE OF TRUCKS: G.S.C. SINGLE EQ.	OUTSIDE FINISH: HIGH STRENGTH STEEL		
WEIGHT OF TRUCK COMPLETE: 22,000	TYPE & THICKNESS OF INSULN.: 2" SALAMANDER		
	MAKE & TYPE OF SEATS: HETWOOD WAKEFIELD/SEAS		
MAKE, TYPE & SIZE OF BEARINGS: A.A.R.	SEATING COVERING: WYANSOTE GREEN	MAKE & TYPE U.C. POWER PLANT: G.M.-30960	
JOURNAL, 5" x 9" FRICTION	MAKE & TYPE OF WINDOW SHADE: CAELI	FUEL TANK CAP'Y: 150 GALS.	

Class M-1 car

'B' UNIT
CAR NO'S. 9001 TO 9789
(ODD NOS. ONLY)

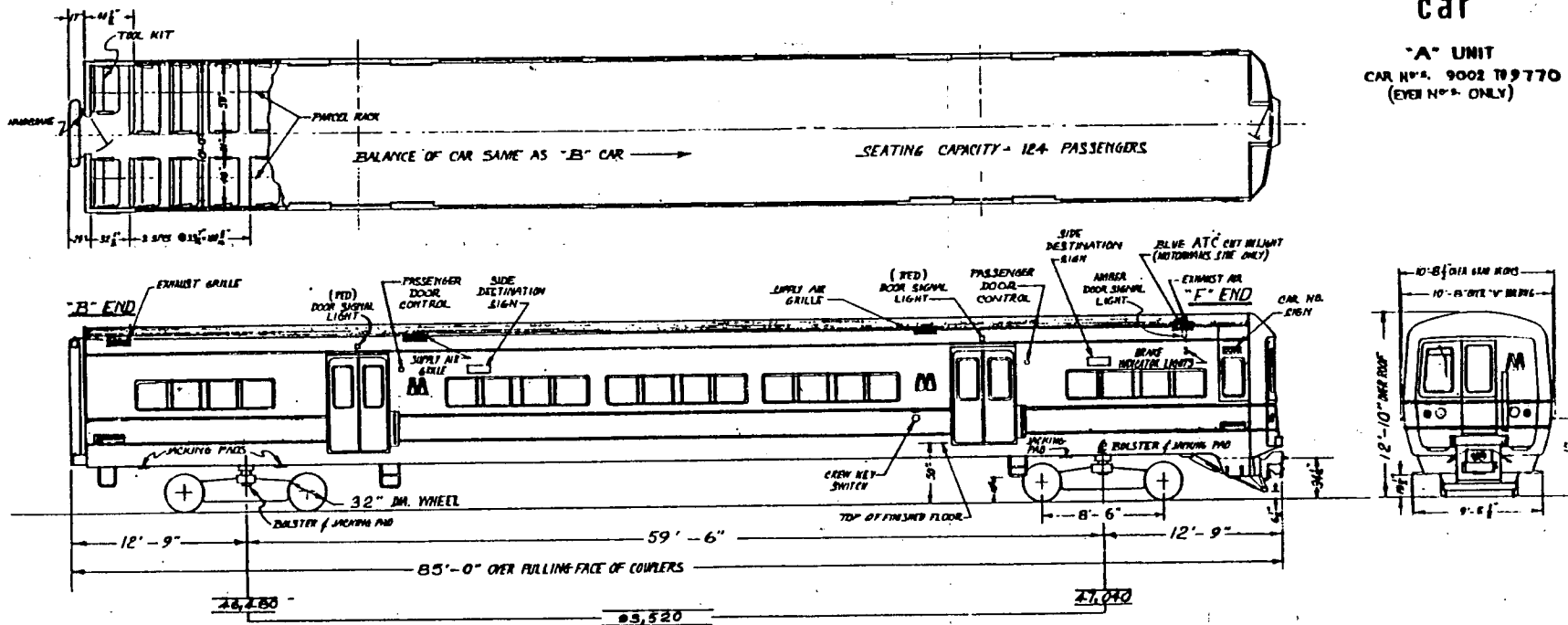


DATA

GENERAL		ELECTRICAL	
TYPE OF CAR - Married Pair	MANUFACTURER - Budd Co. & G.E.	ORDER NO. - MTA 930 & 930A	YEAR BUILT - 1968, '69, '70, '71, '72
AIR CONDITIONING CONTROLS - Vapor ATO/ATC - GE KG262D		BLDS - GE GM19	
CAB SIGNAL - WABCO Type EL		CONTACT SHOES - 2 per truck	
CONTROL GROUP - GE 17K0261		DESTINATION SIGNS -	
DOOR CONTROL - Vapor Corp.		HEADLIGHTS - Trans-Lite FP-1754-1	
HEAT CONTROL - Vapor Corp.		LIGHT FIXTURES - Luminator Fluor.	
MARKER LIGHTS - Trans-Lite FP-1755-1		MASTER CONTROLLER - GE 17KC104	
MOTORS -		No. & Make: 4 GE1255A2	
Voltage: 325/650 Volts D.C.		Continuous H.P.: 160 H.P. each	
Wt. 1 motor complete: 1,347 lbs.		P.A. SYSTEM - Midwest Audio #304	
RADIO - Motorola T43DEW1130		A/W SP3	
RECEPTACLE TRANSF. - GE41A261434P1		110 Volts, 1 Ph. 60 cy. 2KVA output	
SPEEDOMETER - GE A702JS		TRAIN IDENT. SYSTEM - WABCO	
TRAINLINE - Jumper Cables (B End)		WABCO Auto. FL-138 portion (F End)	
WHEEL SLIP CONTROL - GE 17FL5481		MECHANICAL	
AIR COMP. - WABCO D3, 220VAC, 42 CFM		AIR COND. - Trane 14 Ton. elec/mesh.	
		BRAKE SCHEDULE - WABCO RT5-A	
		BRAKE SHOE - WABCO Cobra 12 1/2" V1748	
		BRAKE UNITS - WABCO GJ5 1/2 per truck	
		CONSTRUCTION - Welded Stainless Steel with Fiberglass Cab End	
		COUPLER - WABCO N2A Automatic	
		FLOORING - Rubber Tile	
		GEAR UNIT - GE GA56 Double Reduction	
		4.19:1 Ratio, Wt. 884 lbs.	
		GLASS - (Side Windows) Corning-Int Lexan-Ext.	
		Fusion Safety .200" thk tinted Int.	
		HANDBRAKE - Peacock 800 LG (CEB)	
		HORN - Leslie Type 44 Single Tone	
		ODOMETER - Engler Hubometer	
		RAD. OF CURVE - 240 ft. min. (married)	
		SASH - O.M. Edwards & Trans. Sash	
		SEATS - Gen. Seating, fixed, contoured	
		SUSPENSION - Coil springs in series with WABCO C-1 leveling valves to Control Firestone No. 218 Air Bellows	
		TOILET - Koehler 1-114995 Aircraft Type Chemical	
		TRUCK CLASS - P111	
		TRUCK WEIGHT - 14,500 lbs.	
		VENTILATORS - Trane 4522	
		WINDOW WIPER - Sprague Air Wiper w/GF170 mtr, 110 volts, A.C.	
		DROP SASH - Lexan Single Glazed	

Class M-1 car

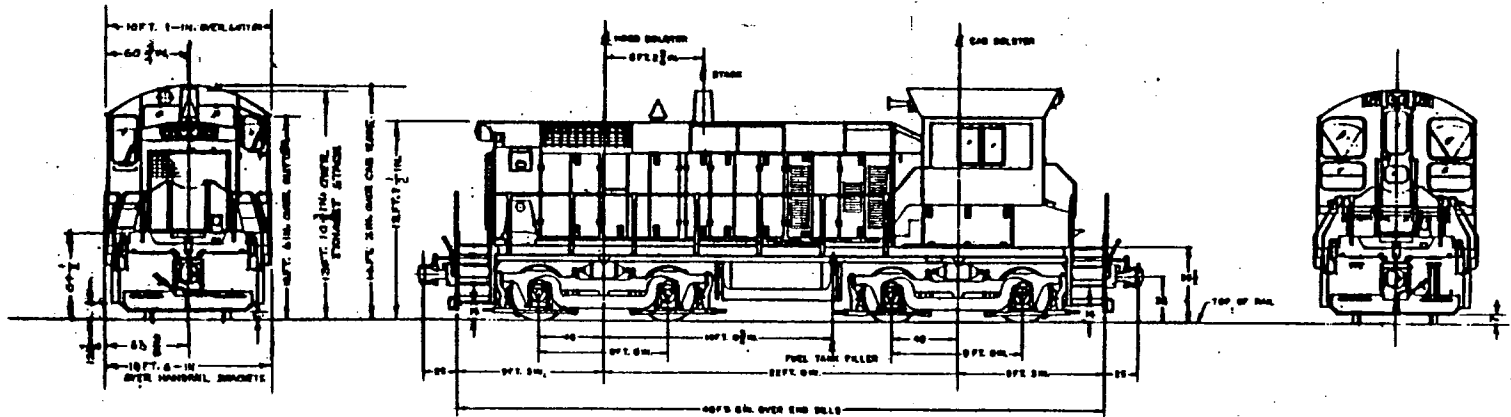
"A" UNIT
CAR NO'S. 9002 TO 9770
(EVEN NO'S ONLY)



DATA

GENERAL		ELECTRICAL		MECHANICAL		GLASS-(Side Windows) Corning Int. Lexan Ext.	
TYPE OF CAR - Married pair	LIGHT FIXTURES-Luminator Fluor.	SPEEDOMETER-GE A702JS	GLASS-(Side Windows) Corning Int. Lexan Ext.	TRAIN IDENT.SYSTEM - WABCO	Fusion Safety .200" thk.tinted ht.		
MANUFACTURER - Budd Co. & G.E.Co.	MARKER LIGHTS-Trans-Lite FP1755-1	TRAIN IDENT.SYSTEM - WABCO	Fusion Safety .200" thk.tinted ht.	TRAINLINE-Jumper Cables ("B" End)	HANDBRAKE - Peacock 800 LG (CEB)		
ORDER NO. - MTA 930 & 930A	MASTER CONTROLLER - GE17KC104	WABCO Auto.FL-138 Portion("F" End)	HANDBRAKE - Peacock 800 LG (CEB)	WHEEL SLIP CONTROL - GE17FL54B1	HORN - Leslie Type 44 single tone		
YEAR BUILT - '68, '69, '70, '71, '72	MOTORS-	MECHANICAL	ODOMETER - Engler Hubometer	AIR COND. - Trane 14 ton elec/mech	RAD. OF CURVE-240 ft. Min(married)		
ELECTRICAL		AIR COND. - Trane 14 ton elec/mech	SASH-O.M. Edwards - Tran. Sash	SEATS-Gen. Seating, Fixed, contour			
AIR COND. CONTROL - Vapor Corp.	No. & Make: 4 GE1255A2	SEATS-Gen. Seating, Fixed, contour	SEATS-Gen. Seating, Fixed, contour	SUSPENSION-Coil springs in series			
BATTERY - Edison,Nickel Iron,	Voltage: 325/650 volts D.C.	SUSPENSION-Coil springs in series	SUSPENSION-Coil springs in series	W/WABCO C-1 leveling valves to			
B-10-H 25 cells,32VDC,187 AH.	Continuous HP: 160 HP each	W/WABCO C-1 leveling valves to	W/WABCO C-1 leveling valves to	Control Firestone #218 air bellow			
BATTERY CHARGE RECT.-GE41A254636P4	Wt. 1 mtr. complete: 1,347 lbs.	CONTROL FIRESTONE - Firestone #218 air bellow	CONTROL FIRESTONE - Firestone #218 air bellow	TRUCK CLASS - P111			
BATTERY CHARGE TRANS-GE41B555578P1	MOTOR ALTERNATOR-	TRUCK CLASS - P111	TRUCK CLASS - P111	TRUCK WEIGHT - 14,500 lbs.			
BLDS - GE GMG19	Type: GE GMG-2-559	TRUCK WEIGHT - 14,500 lbs.	TRUCK WEIGHT - 14,500 lbs.	VENTILATORS - Trane 4522			
CONTACT SHOES - 2 per truck	Voltage Input: 650 volts D.C.	VENTILATORS - Trane 4522	VENTILATORS - Trane 4522	WINDOW WIPER-Sprague Air Wiper			
CONTROL GROUP - GE 17KG261	Voltage Output: 220 volts A.C.	WINDOW WIPER-Sprague Air Wiper	WINDOW WIPER-Sprague Air Wiper	W/GF170 motor.110 volts, A.C.			
DESTINATION SIGNS -	60 cy, 3 Ph, 70 KW	W/GF170 motor.110 volts, A.C.	W/GF170 motor.110 volts, A.C.	DROP SASH - Lexan Single Glazed			
DOOR CONTROL - Vapor Corp.	PA SYSTEM-Midwest Audio Model 304	DROP SASH - Lexan Single Glazed	DROP SASH - Lexan Single Glazed				
HEADLIGHTS - Trans-Lite FP-1754-1	RADIO-Motorola T-43DEW1130 A/W SP3						
HEAT CONTROL - Vapor Corp.	RECEPTACLE TRANSF-GE 41A261434PL						
	110V, 1 Ph, 60 Cy, 2 KVA output						

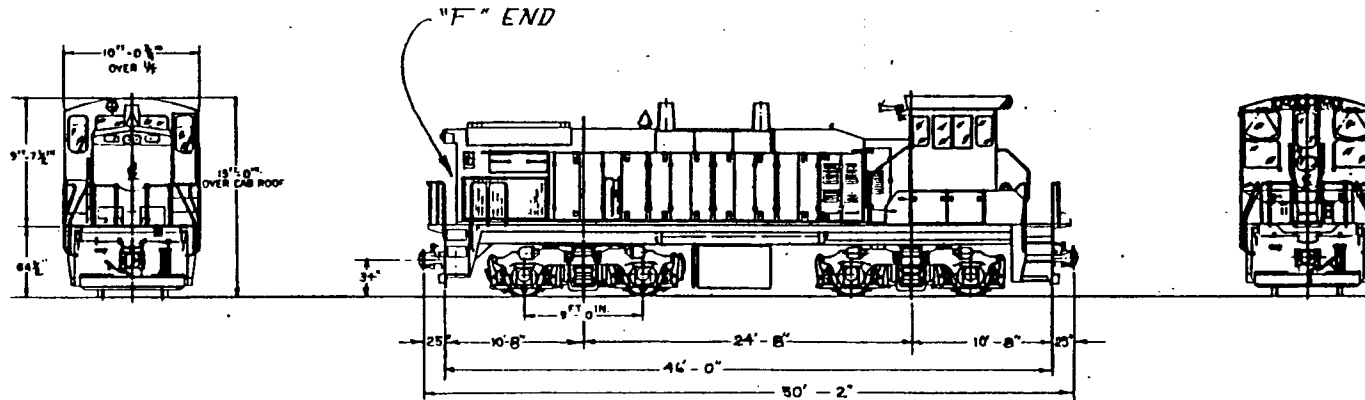
CLASS E-10



GENERAL DATA

BUILDERS MODEL: SW 1000 LOCOM.	BRAKES: BASIC 2-6 NL BRAKE SCHEM-	CAB HEAT: ELECTRIC	OIL PAN: 135 GALS. CAPY.
HORSEPOWER: 1000	ULE WITH 6 NR. DIST-	WATER COOLER: PRIME PM 568	FUEL CAPY: 1000 GALS.
ROAD No's: 100-107	RIBUTING VALVE.	SAN CAPY: 15 CU. FT. PER END	FUEL GAUGE: ROCHESTER
WEIGHT: 235,300 LBS.	WHEELS: 40" GRADE A	"F" LOCATED ON LONG HOOD END	DIAL TYPE ON ENGINEER'S
GEAR RATIO: 62:15	AUX. GEN: 18 KW/AC IN PLACE	COUPLER: BASIC MS-485-6A "E"	SIDE ONLY.
SERIAL Nos: 766042-1 THRU	OF 10 KW DC.	FIRE EXTINGUISHER: TWO 30#	
766042-8	BATTERIES: GENERAL 4 HR 2500	ANSUL (ONE IN CAB AND	
JOURNALS: 6 7/8 DIAMETER	RADIO: MOTOLOLA "MICOR" MODEL	ONE IN ENGINE COMPART.)	
BEARINGS: TINKEN CLASS F 6 1/2 X 12	TRACTION MOTORS: D 77	TOILET: NONE PROVIDED	

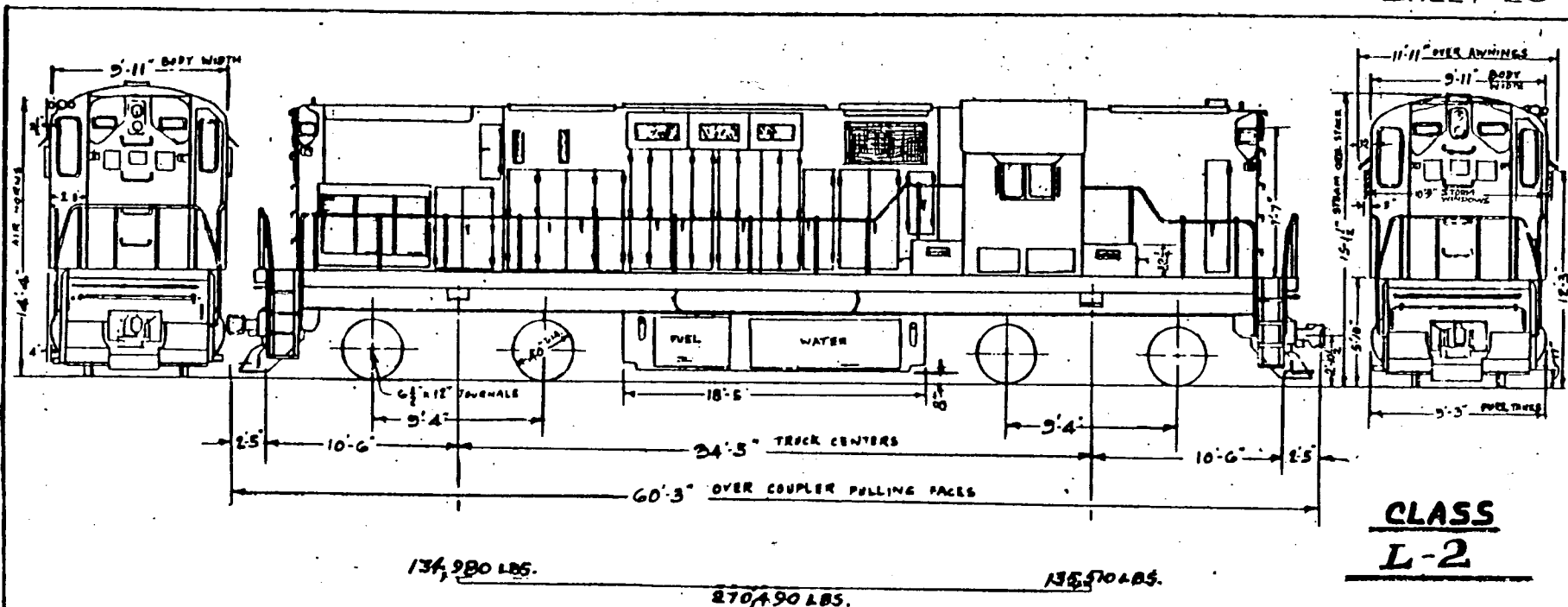
CLASS E-15



TOTAL LOADED WEIGHT ON RAILS
248,000 LBS. (APPROX.)

GENERAL DATA

TYPE OF SERVICE: MULTI-PURPOSE	COOLING WATER: 230 GALS. OIL PAN CAPACITY: 165 GALS. HORSE POWER: 1500	SAND CAP. HOOD END: 15 CU. FT.	FIRE EXTINGUISHERS: TWO #30 ANSUL (ONE IN CAB AND ONE IN ENGINE COMPARTMENT)
CLASS OF LOCO.: E-15	ENGINE TYPE: 645	BEARINGS: HYATT JEM ROLLER	
LOCOMOTIVE NO'S: 150 TO 178 SERIES NO'S: 766043-1 THRU 766043-23	MOTOR TYPE: D77	WHEEL DIAMETER: 40" GRA. WAREHOUSE	
BUILDER: E.M.D. GEN. MOTORS	MAIN ALTERNATOR: AR10	SIDE BEARINGS: FRICTION TYPE	
BUILDERS MODEL: MP15 (AC)	AUTOMATIC SPEED CONTROL: VABCO	ALTERNATOR: EMD 200 V. 3 PHASE	
YEAR BUILT: 1977	TYPE OF AIR BRAKE: 26L WITH "F" CONTROL VALVE	AIR HORN: NATHAN WH-5405-4 MODEL P	
MIN. RADIUS OF CURVE: 110' LOCO. ONLY	AIR COMPRESSOR: WBO 3 CYL. WATER COOLED	BATTERIES: GENERAL 4HR-2500	
NO. OF DRIVERS: 4 PAIRS	COUPLER: TYPE "E"	WATER COOLER: PRIME TM 5CB REFRIGERATOR	
GEAR RATIO: 59:18	SAND CAP. CAB END: 15 CU. FT.	CAB HEAT: ELECTRIC	
FUEL CAP.: 1400 GALS.		RADIO: MOTOROLA "MOTOR" 4 CHANNEL	
FUEL GAUGE: ROCHESTER WALTYPE - ENDS R. SIDE ONLY			
DRAFT GEAR: MS 485-6A			



CLASS
L-2

EQUIPPED WITH SNOW PLOW

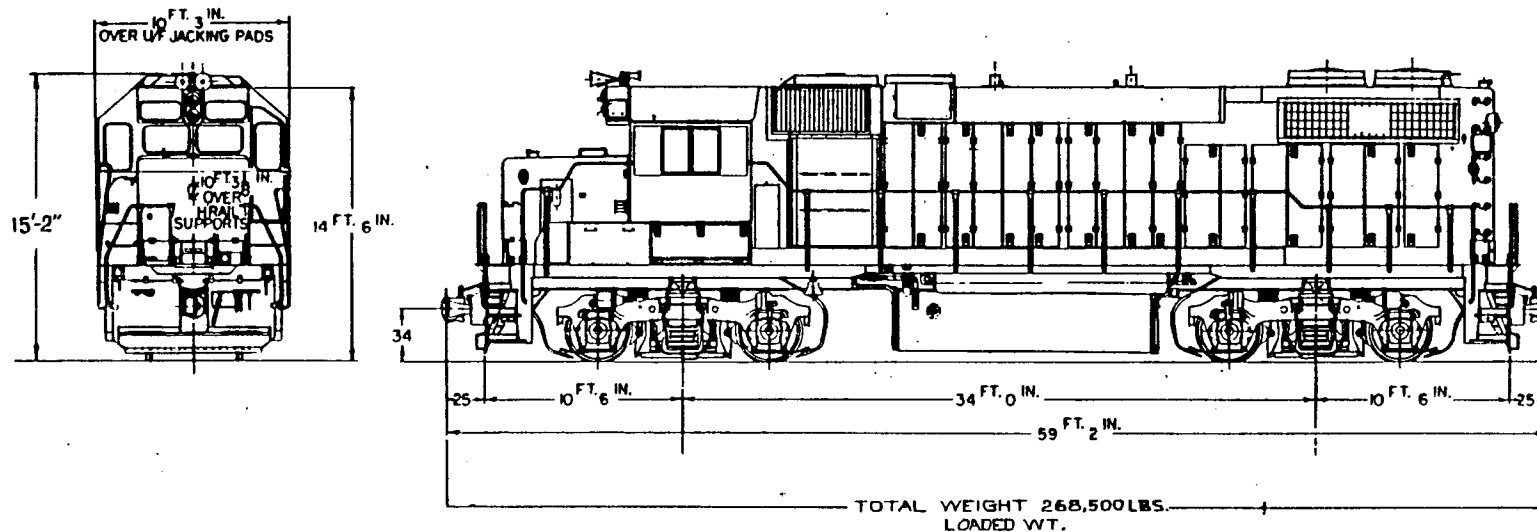
BUILDERS MODEL No. C-420

- GENERAL DATA -

TYPE OF SERVICE - GENERAL PURPOSE	MAKE & TYPE OF HAND BRAKE - PEACOCK LEVER TYPE	HORSE POWER - 2000	WT. OF TRUCK - 38,900 LBS.
CLASS OF LOCOMOTIVE -	MAKE & TYPE OF JOURNAL BEARING - TIMKEN ROLLER	ENGINE GOVERNOR - WOODWARD PG	TURBO SUPER CHARGER MODEL - 520
LOCOMOTIVE NUMBERS - 222 - 229	DRAFT GEAR - N.M. & S.C. N° M-381 RUBBER	TOTAL WEIGHT PER ENG. - 32,300 LBS.	MAKE & TYPE GENERATOR - GE-9T381
BUILDER & DATE BUILT - ALCO 1968	COUPLER - TYPE - AAR TYPE "E"	GEAR RATIO - 2.4:1.79	TE, CONTINUOUS RATING - 45,580 LBS.
MIN RADIUS OF CURVE - LOCO ONLY 39' (147')	AUTO SPEED CONTROL - YES USS.CO.	N° ENG. WATER RAD UNITS - (1)	@ 12.8 MPH
MIN RADIUS OF CURVE - LOCO COUPLED 30' (119')	FIRE EXTINGUISHER - 2 MIDDE 20 LBS.	RADIATOR FAN DRIVE - EDDY CURRENT CLUTCH	
MAKE & TYPE OF TRACTION MOTORS - GE 752E(A)	FUEL OIL CAPY GALS. - 1000 GALS.	N° ENG. OIL HEAT EXCHANGERS - (1)	
TRACTION MOTOR BLOWER - MECHANICAL	LUBE OIL CAPY GALS. - 240 GALS.	MAKE & TYPE AIR COMP - WABCO - 30DCL	
SPEED MPH. CONT. RATING	ENG COOLING WATER CAPY - 193 GALS.	MAKE & TYPE OF AUXILIARY GEN. - GE - GY-27	
AMP. HR. CAPY - BHR. RATE 420	MAKE & TYPE STEAM GEN. - VAPOR - 21-0K4635	MAKE & TYPE OF TRUCKS - ALCO HI - 8D	
MU CONTROL - YES	STEAM GEN. HEATING WATER CAPY - 1900 GALS.	NO. SAND BOXES - 2	
TRANSITION - AUTOMATIC - YES	STEAM GEN. CAPY. ¹⁰⁰ / HR - 3500	SAND BOX CAPY - 4.8 CU. FT.	
MAKE & TYPE OF BATTERY - EXIDE MS420, KW	MAKE & MODEL OF DIESEL ENGIN - ALCO, Z5IC-12	TRACTION EFFORT 2570 ⁶⁷ / 20 LBS	
MAKE & SCHEDULE AIR BRAKE - WABCO-26L	ENGINE RPM. 400-1025	SANDERS - MAKE & TYPE - SALEM 277-2	
WT OF TRACTION MOTOR - 7505 LBS	N° & SIZE OF CYL. PER ENG. - 12 - 5X10 1/2	MAX. ALLOWABLE SPEED - 84	

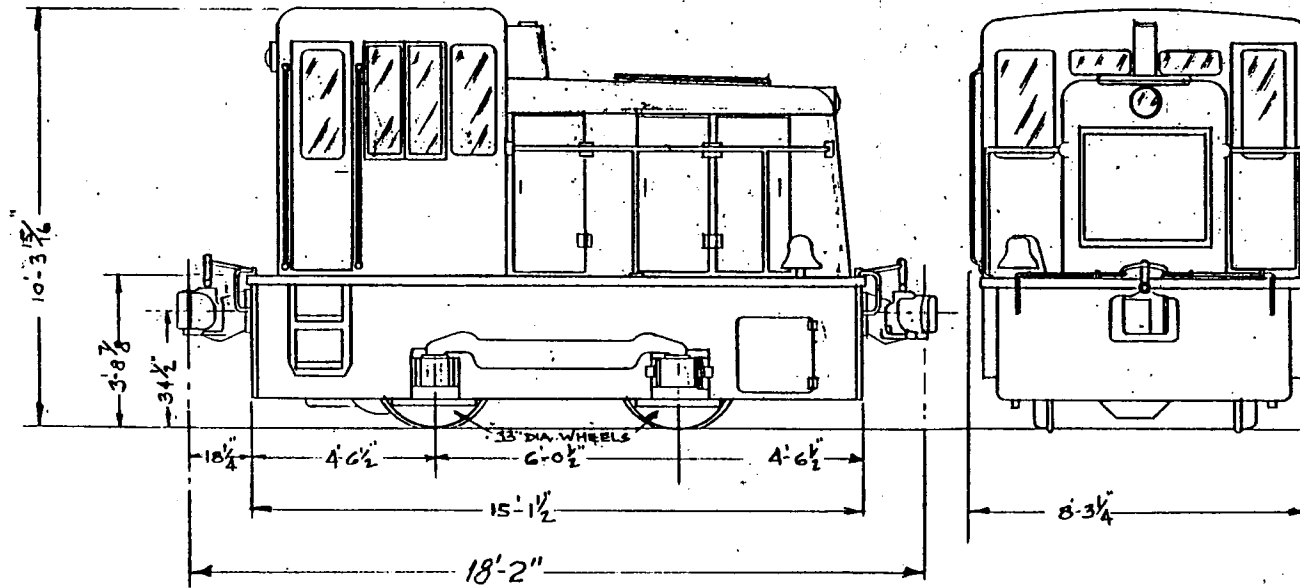
CLASS E-20

No's. 250 - 277



GENERAL DATA

TYPE OF SERVICE: GENERAL PURPOSE	No. & SIZE OF CYL: Y16 9 $\frac{1}{2}$ " X 10"	LOCO. NUMBERS: 250 TO 271	* No's 250 TO 271 BUILT 1976
CLASS OF LOCOMOTIVE: E-20	HORSE POWER: 2000	WEIGHT: 268,500 LBS.	No's 272 TO 277 BUILT 1977
BUILDER: E.M.D. GEN. MOTORS CORP.	ENGINE GOVERNOR: ELECT-HYDRAULIC	SPEED CONTROL: U.S. 7 INDICATION	
YEAR BUILT: 1976 & 1977*	TURBOCHARGER: ROTARY BLOWER	MAXIMUM SPEED: 82 MPH	
FORMER OWNER: NEV	MAIN GENERATOR: AR 10E1	TRACTION EFFORT: 44,000 LBS	
MIN. RADIUS CURVE COUPLED: 240 (24°)	AUX. ALTERNATOR: D-14-	DYNAMIC BRAKES: NONE	
MIN. RADIUS CURVE LOCO. ONLY: 140 (42°)	TRACTION MOTOR: D 77	LOCOMOTIVE TYPE: B-B 0440	
TYPE JOURNAL BEARING: HYATT ROLLER 6 $\frac{1}{2}$ "	GEAR RATIO: 59:1 B	SAND CAPY. 56 CU. FT.	
COUPLER: TYPE "E"	BATTERY: 32 CELL 64V, 420AMP	RADIO EQUIP. - MOTOROLA MOD.# RA3RTH 3190 SP04	
FUEL OIL CAP: 3000 GALS.	M.U. CONTROLS - YES	ENGINE COOLING WATER - 240 GALS.	
LUBE OIL CAP: 243 GALS.	AIR BRAKE SCHEDULE: 26 L	DRAFT GEAR - NAT. CAST. NL-391	
STEAM GENERATOR: NONE	AIR COMPRESSOR: GARDNER DENVER "WB"	JOURNALS - HYATT ROLLER 6 $\frac{1}{2}$ "	
ENGINE TYPE - GM 16 CYL 645E	WHEEL DIA. - 40"	No. OF FIRE EXTINGUISHERS - 2	
ENGINE RPM: 3/5 IDLE 900 MAX.	ENG. OVERSPEED TRIP OUT: 990-1005		



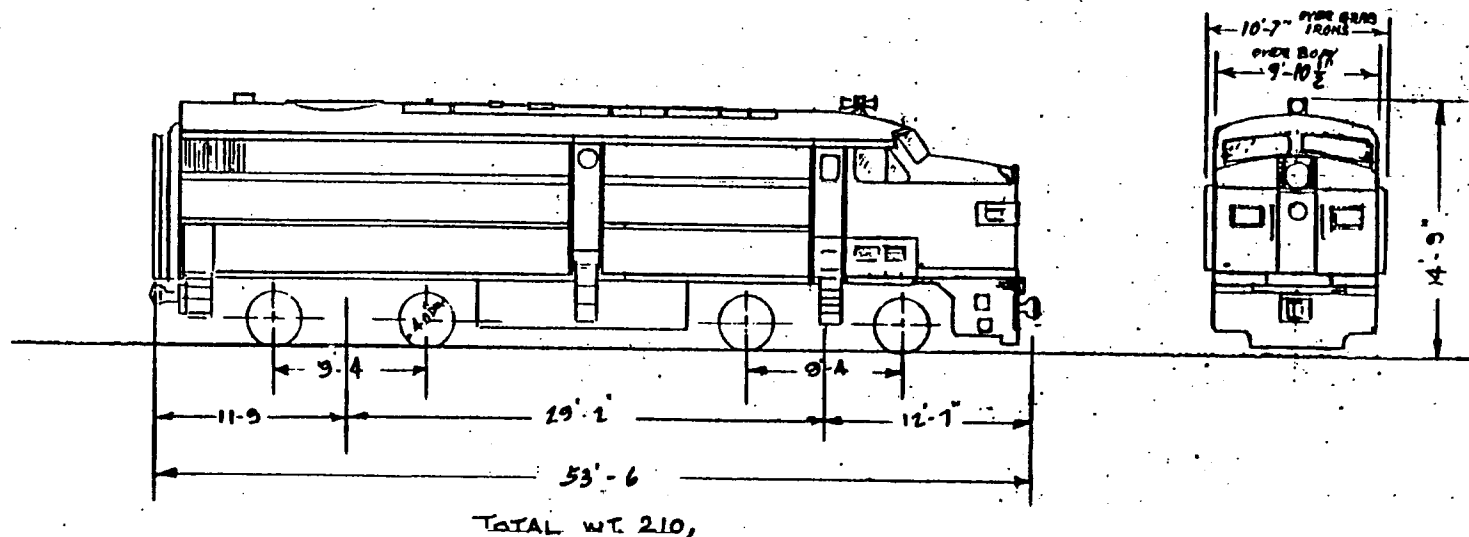
TOTAL WT.-51,000 LBS. WORKING ORDER

~GENERAL DATA~

TYPE OF SERVICE SWITCHING		HORSEPOWER	150	MAKE & TYPE AIR COMP	GARDNER DENVER } ACM
CLASS OF LOCOMOTIVE	G5-1 25TON (EE)	ENGINE GOVERNOR	MECHANICAL		
LOCOMOTIVE NUMBER	398 to 399	TOTAL WEIGHT PER ENGINE			
BUILDER & DATE BUILT	1958	TURBOSUPERCHARGER			
MIN. RADIUS OF CURVE LOCO ONLY	40'-0"	Nº ENG. WATER RAD. UNITS	- ONE		
MIN. RADIUS OF CURVE LOCO. COUPLED		RADIATOR FAN DRIVE			
TRACTIVE EFFORT 30% ADH.	15,000 LBS.	Nº ENG. HEAT EXCHANGERS			
TE. CONTINUOUS RATING		MAKE & TYPE OF MAIN GEN. GE.	GT-1519-A1		
SPEED MPH CONT. RATING		MAKE & TYPE OF AUXILIARY GEN.	LOWE NEVILLE 2023		
SPEED MPH MAX. ALLOWABLE	20 MPH.	MAKE TYPE & Nº OF TRACT MOTORS	GE 763A1		
HV CONTROL	NONE	GEAR RATIO	19.9/1		
TRANSITION					
MAKE & TYPE OF TRUCKS - NONE	0-4-0(B)	MAKE & TYPE OF DIESEL ENG. 1.	CUMMINS HPI 600	MAKE & TYPE OF BATTERY	EXIDE
WEIGHT OF TRUCK (4 WHEEL)	NONE	ENGINE RPM	1800	AMP. HR. CAP. - 8 HR. RATE	
WEIGHT OF TRUCK (6 WHEEL)	NONE	Nº & SIZE OF CYL PER ENG. GUL.	4 7/8" x 6"	MAKE & SCHEDULE AIR BRAKE	WAB. STRAIGHT

PC-6

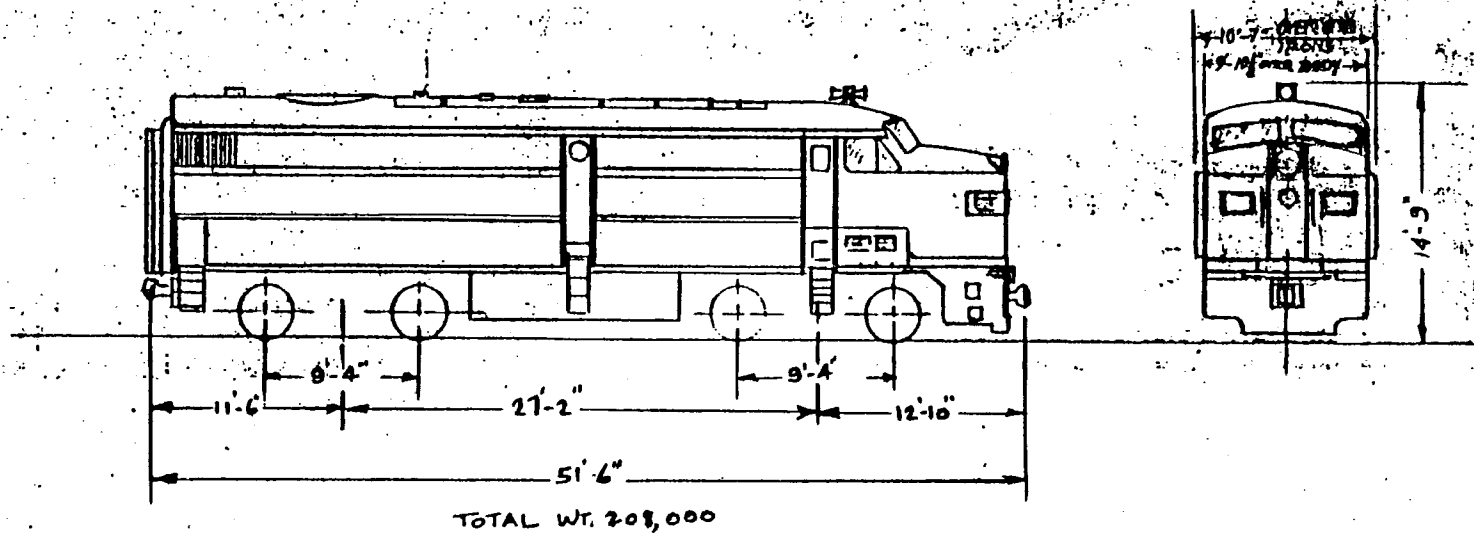
PUSH PULL POWER UNIT



DATA

Type of Service: Push-Pull	Horsepower: 1600	<p>NOTE: These units generate constant voltage at 650V for use in powering the push-pull cars. There are no propulsion traction motors. They also contain an operating station for push-pull.</p>
Class of Loco: PC-6	Eng. Governor: G.E.	
Power Unit Nos.: 600 to 610	Total Wt. of Engine: 31,350 lbs.	
Builder: Alco	No. Eng. Water Rad. Units: 4	
M.U. Control: Yes	Rad. Fan Drive-Eddy Current Clutch	
Wt. of Trucks:	Main Gen: GE 581	
Journal Bearing Roller: 6 1/2 x 12	Aux. Gen: GE5G127A3	
Draft Gear: M-380	Battery: Exide	
Coupler: "E"	Amp. Hr. Cap. 8 Hr. Rate: 426	
Sanders: None	Air Brakes: 24RL	
Fuel Oil Cap. Gals: 1,200	Air Compressor: WAB 3-CDC	
Lube Oil Cap. Gals: 200	Auto. Speed Control: USS-7 Aspect	
Diesel Eng: 244	Former Class: FA-2	
Cylinder/Engine: 12 cyl. 9"-10 1/2"		
Eng. Cooling Water Gals: 250		

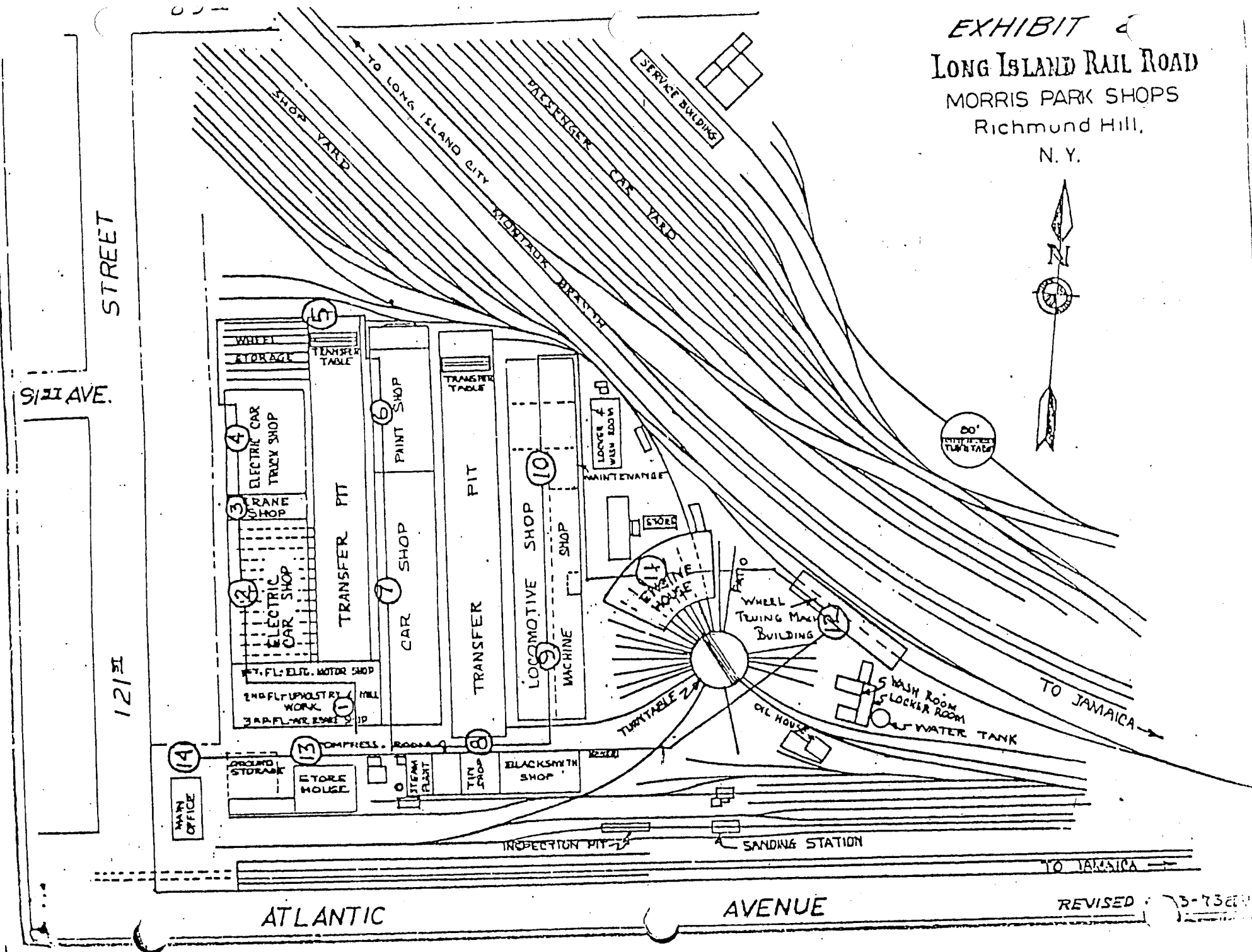
**PC-6
PUSH PULL POWER UNIT**



D A T A

Type of Service: Push-Pull	Horsepower: 1600		
Class of Locos: PC-6	Eng. Governor: GE		
Power Unit Nos: 611 to 618	Total Wt. of Engine: 31,350 lbs.		
Builder & Date Built: Alco	No. Eng. Water Rad. Units: 4		NOTE: These units generate constant voltage at 650V for use in powering the push-pull cars. There are no propulsion traction motors. They also contain an operating station for push-pull.
M.U. Control: Yes	Rad. Fan Drive-Eddy Current Clutch		
Wt. of Trucks:	Main Gen: GE 581		
Journal Bearing Roller: 6 1/2 x 12	Aux. Gen: GE5G127A3		
Draft Gear: M-380	Battery: Exide		
Coupler: "E"	Amp. Hr. Cap. & Hr. Rate: 426		
Sanders: None	Air Brake: 24RL		
Fuel Oil Cap. Gals: 1,200	Air Compressor: WAB 3-CDC		
Lube Oil Cap. Gals: 200	Auto. Speed Control: USS-7 Aspect		
Eng. Cooling Water Gals: 250	Former Class: FA-1		
Diesel Eng: 244			
Cylinder/Engine: 12 cyl. 9"-10 1/2"			

EXHIBIT 2
 LONG ISLAND RAIL ROAD
 MORRIS PARK SHOPS
 Richmond Hill,
 N. Y.



STREET

91st AVE.

121st

ATLANTIC

AVENUE

REVISÉD 3-73