



SEMAPHORE



April 2023

The LIST Next meeting will be held on **Friday, April 21st at 8:00 p.m.**

The April meeting will be **IN PERSON** at the historic Van Bourgondien house in West Babylon as well as **by ZOOM**. The address of the Van B house is 600 Albin Avenue in West Babylon.

THIS MONTH

Ed Koehler will present

Long Island Rail Road Motive Power

October 1898 to October 1955.

IN THIS ISSUE

- Page 2 **March Membership Meeting Info**
- Page 3 **LIST Happenings**
- Page 4 **LIRR News**
- Page 5-7 **Roxey Achieves Immortality**
- Page 8 **Oyster Bay Railroad Museum**
- Page 9 **Railroad Museum of LI**
- Page 10 **The LIRR Modeler**
- Page 11 **LIST Publication Order Form**

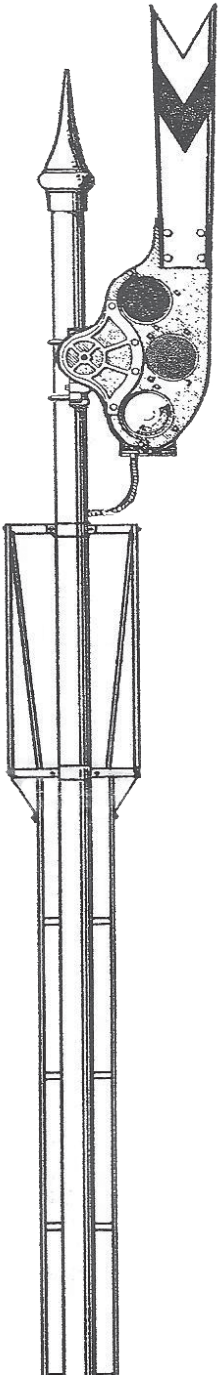
For Regular updates and other important information, visit the LIST Chapter website at: LIST-NRHS.org

Our Chapter's mailing address is:

LIST-NRHS

PO Box 507

Babylon NY 11702-0507



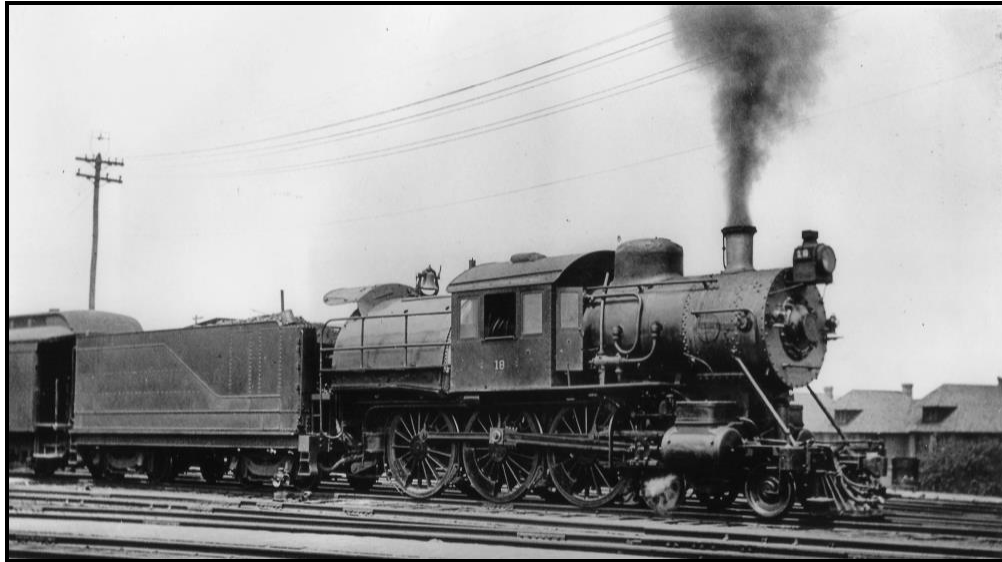
The Publication of the
Long Island - Sunrise Trail Chapter
of the
National Railway Historical Society



March Membership Meeting Information by Ed Koehler

LOG IN INFORMATION FOR THE APRIL MEMBERSHIP MEETING *Long Island Motive Power – October 1898 to October 1955*

In order to save our limited bandwidth, we ask all of our local members to attend in person.



G54sa fourth number 18 in Richmond Hill on June 19, 1955. George Lightfoot Collection

Friday, April 21, 2023 at 8:00 PM eastern, 7:00 PM central: **The April Membership Meeting of the Long Island Sunrise Trail Chapter, National Railway Historical Society** will be held at 600 Albin Avenue in West Babylon, New York. If you are located near the meeting site, we ask that you attend in person to reserve our limited bandwidth for our out of town members. Due to an illness with our speaker, the presentation originally scheduled for this evening was shown at the March membership meeting. There was a prequel presentation to that show so this evening, we will view Ed Koehler's **Long Island Rail Road Motive Power October 1898 to October 1955**. Lots of steam, electrics, and even four diesel locomotives, or was it five? Come and decide for yourself. By the way, if you are getting this electronically, the handouts for the March presentation and this presentation are attached to the email.

To attend this event, click this link:

<https://us02web.zoom.us/j/81244218518?pwd=c3BmTW1qcDRwVThGS1JCc29jdnI3Zz09>

Meeting ID: 812 4421 8518 Passcode: 556165

One tap mobile:

+16469313860,,81244218518#,,,,*556165# US

+19292056099,,81244218518#,,,,*556165# US (New York)

Any questions or problem with Zoom® please contact Ed Koehler at EdwardMKoehler@nyc.rr.com or call him at 917-603-4276. E-Mail contact is discontinued at 5:30 PM eastern time the day of the event.

- * * * -

Do you have something to offer? If you have a computer based presentation or want to do a lecture via a computer based camera (or a combination of both); please send an E-Mail to President Steve Quigley at csquigley@optonline.net and we will talk.

- * * * -

LIST Happenings by Steve Quigley

The Babylon Town Board and Town Historian, Mary Cascone were joined by Deer Park residents and two LIST Board members on March 4 to unveil a historical marker commemorating the Long Island Rail Road and the original Deer Park train station. The new marker stands at the northwest corner of Deer Park Ave. and Acorn St. The LIRR arrived in 1942 and the Deer Park sta. was the first train station in the Town of Babylon. On March 17 a marker was dedicated at a ceremony in Wyandanch Plaza commemorating the first Wyandanch depot which was built in 1875. The station was originally named West Deer Park then renamed Wyandance in 1889. The hamlet and station were later renamed Wyandanch. On April 17, at 1PM, a marker will be dedicated at the LIRR's Pinelawn station. Your attendance at the ceremony dedicating the Pinelawn marker is appreciated.

LIST Trip Chairman Robert Grant has been communicating with the President of the New York & Atlantic Railway who has approved a visit by LIST members to the Glendale yard of the NY & A. The visit to the yard will be open to LIST members only and there will be no charge for the tour. We do not have a definite date yet but it will most likely occur on a Friday in May or June. Regarding food, the Glendale diner is approximately ½ mile from the yard and it has on - site parking.

If you are interested in attending the tour, please email or call Bob Grant or myself. Bob's contact information is as follows: Cell #917 327-5151 or gorailroading2018@aol.com. My contact information is in this edition of the Semaphore.

We are beginning to gather ideas for our 2024 LIRR calendar and we have a cutoff date for photo submissions. THIS YEAR THE CUTOFF DATE FOR PHOTO SUBMISSIONS WILL BE MAY 19TH WHICH IS THE DATE OF OUR MAY MEETING. Having May 19th as a last day for submissions should give us enough time to produce our calendar in a timely manner. After all, we are an all volunteer organization relying on members to assist in their free time.

The NYC Transit Museum has some excellent Virtual Programs lined up for April. Some of the programs are as follows: "MTA Bridges and Tunnels 90th Anniversary, Andrew Hagstrom: Colossus of N Y Subway Maps" among others. There is a New Program, "Underground NYC Tour: Secrets of the Subway." Limited tickets remain for the tour. Go to info@nytransitmuseum.org regarding the programs and the New York Transit Museum Store online to view all the items that the Museum Store has.

We are always looking for articles for the Semaphore, just let me know and I am sure that we will be able to print it [sooner or later]. My e mail address is csquigley@optonline.net and my telephone # is 631-487-4766. Please do not mail me hard copies of your articles. Please email your articles as we have to retype mailed copies.



LIRR News by Steve Quigley

On Thursday March 30, Long Island Yankee baseball fans were able to attend a baseball game in the Bronx without having to take the subway. Since the LIRR now goes into Grand Central Madison, a fan who wishes to attend a game just has to go upstairs and take a Metro-North train to the "Yankee-E.153rd street" station on its Hudson Line. Previously, a person wishing to go to Yankee Stadium by train from Long Island would travel to Penn Station then take the "D" subway line for a long trip to the stadium. [It was a long trip! SQ] The railroad's new "Combo Ticket" allows the LIRR's riders to make the trip paying for a single fare, the cost of the first leg of the journey plus an additional \$8 to complete the journey on Metro-North.

On the other hand, if you wish to take the subway to Yankee games, below is a photo of this year's Opening Day subway train to Yankee Stadium.

The LIRR has proposed new rules of conduct for its new Grand Central Madison station. Under the proposed rules sitting on a bench for longer than 90 minutes and traveling with your emotional support dog are unacceptable. The new rules mirror the ones that are already in place at GCT which is above GCM. Many of the rules appear to target loitering in the station, including by homeless people. However, station officials may waive the rules in instances of significant delay or other circumstances. The rules ban most animals from the station. Any commercial activity without the expressed written agreement by the MTA is also prohibited.

The LIRR completed the replacement of the Cherry Valley Avenue Bridge in Garden City on 4/2. The Cherry Valley Avenue bridge was the most struck overpass in the LIRR's network. The bridge is being raised by more than 4 feet and is being modernized. [I passed the bridge at night on 3/31 and work was being performed in preparation for the Sunday move SQ]

The LIRR will be running the South Fork Commuter Connection trains between Speonk and Montauk 5 days a week this coming summer. The SFCC has helped significantly boost ridership along the South Fork. The SFCC was dropped when the pandemic hit but was revised in September 2021. In prior summers, the SFCC did not run on Fridays due to a reputed lack of equipment. However, the LIRR will be running 4 of the 5 shuttle trains on Fridays. The one way fare is \$3.25, \$30.75 weekly and \$89 for a monthly pass.



Photo by Walter Hilsenbeck Jr.

Roxey Achieves Immortality

By David D. Morrison

The legend of Roxey, the Long Island Rail Road mascot of the early 1900s, is firmly affixed in the railroad's folklore. Newspaper reports of the day wrote about Roxey, and Stafford's Pharmacy of Freeport published two postcards of "Roxie" – one sitting and one standing.

Roxey's legend was firmly established in the June 1931 edition of the Long Island Railroad Information Bulletin (for the purest, "railroad" was one word for that publication). That was followed up by an article written by Freeman Hubbard that appeared in his book, *Railroad Avenue* (published in 1944 by the McGraw-Hill Book Company). In his story, Hubbard wrote about the dog once riding in a private railroad car with President Theodore Roosevelt from Long Island City to the Oyster Bay train station. Ron Ziel reiterated Hubbard's story on page 205 of his book, *Steel Rails to the Sunrise*.

Roxey's monument stone can be seen today behind the roadway guard rail at the corner of Merrick Avenue and Sunrise Highway. It is in a rather non-descript, almost unnoticeable location, a stone's throw from the Merrick Station waiting room entrance. There is also a bronze plaque on the waiting room wall.

In 2010 Heather Hill Worthington wrote a children's book titled: *Miles Of Smiles – The Story of Roxey, the Long Island Rail Road Dog*. The book was illustrated with 16 images of Roxey that were painted by Bill Farnworth who used this author's postcard "as a model" for his artwork.

During the planning of the LIRR Third Track Project, it was determined that three (3) historic structures in Mineola would have to be demolished because they would be in the path of the new track. Those structures were: the 1923 eastbound waiting room building, the 1910 electric substation No. 8 and the 1923 Nassau Tower. To ease the pain to Mineola residents and LIRR enthusiasts, it was decided that a statue would be placed at the Mineola Station building to serve as a bit of compensation for the loss of the 3 historic structures.

Artist Donald Lipski, after reading Worthington's book about Roxey, decided that a sculpture of Roxey would be fitting statue for the location. Lipski was known to the MTA, having designed the massive chandelier that is inside the Lexington Avenue entrance to Grand Central Terminal.

The question in Lipski's mind though was how to portray the dog.

Upon studying Mineola history, he learned that the first female solo-aviator in the country was Bessie Raiche, who flew her home-made airplane out of Mineola airfield in 1910. Lipski thought, "what a great blending of subjects for a statue." It would be a tribute to both aviators and railroaders.

Lipski drew the artwork for the statue and got modeling artist Christopher Collins to perform the sculpting work. The statue was fabricated in bronze by Art Castings of Colorado.

The statue was delivered by flatbed truck to Mineola Station on February 22nd.

Bessie and Roxey was supposed to be officially unveiled on March 2nd, but it was unceremoniously unveiled on March 1st.

A small metal plate on the statue's base identifies the sculpture.

A plaque on the trackside wall of the station building tells the story of the statue.

Lipski's Bessie and Roxey was intended to be a statue that would not be mired in controversy, as has been the case with many statues in recent years. This is a gorgeous statue that should last through the ages.

Roxey Achieves Immortality

By David D. Morrison

Bessie & Roxey

The sculpture by artist Donald Lipski depicts two extraordinary figures, Bessie and Roxey, whose stories of courage and determination have often gone untold. The whimsical painting celebrates these notable Long Island residents who did not cross paths but are interconnected through their ties to the area and early 20th century transportation. Their shared local history is forever preserved.

Bessie Raiche

On September 16, 1910, Bessica (Bessie) Raiche became the first woman in the United States accredited with piloting an airplane solo. She and her husband built the biplane in their Mineola home before several flights at Hempstead Plains. Their flyer used bamboo, silk and piano wire instead of the heavier steel and canvas used by the Wright brothers. After receiving a diamond-studded gold medal from the Aeronautical Society of America inscribed to the "First Woman Aviator of America," Bessie and her husband started their own company in Mineola building planes and giving flying lessons. Her aviation career lasted a few more years before she moved to California to continue her previous career as a physician—one of the first American women to specialize in obstetrics and gynecology. She is remembered as a "new woman of the modern era" who drove a car and practiced the sports of shooting and swimming. Bessie died of complications from heart disease in 1932.

Roxey the LIRR Dog

In 1901, a free-spirited pooch named Roxey (Roxie) made his way to Long Island Rail Road's Garden City Station. There are several versions of how the puppy came to board the train, but the fact remains that he was cared for and well-fed by railroad crew and passengers. He became the LIRR mascot, with an official pass to sit wherever he chose when train hopping. Roxey often returned to sleep with the station master in Garden City who adopted him. On several occasions, the LIRR dog travelled with President Teddy Roosevelt in his private car to Oyster Bay and even visited the President's home at Sagamore Hill. Roxey passed away in 1914 and lies in rest next to Sunrise Highway at Merrick Station where loyal commuters come to bring flowers and freshen his water bowl. Roxey's story is told in the children's book "Miss of Smiles" by Heather Hill Worthington.











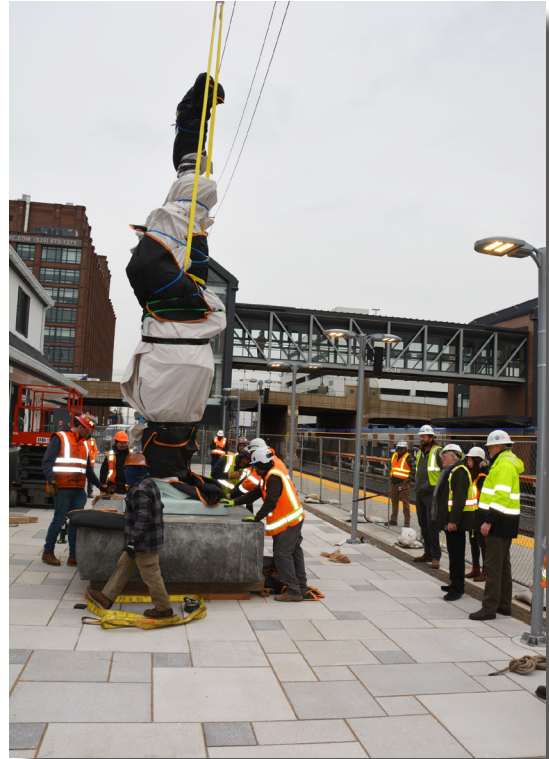
Bessie & Roxey, 2023
Donald Lipski, Artist
Christopher Collins, Modeling Artist
Art Castings of Colorado, Fabricator
Commissioned by MTA Arts & Design and Long Island Rail Road

In 1901, a lonesome dog named Roxey had lost its owner while on a train to Roslyn. Roxey quickly began to explore his new surroundings and soon began riding trains all over Long Island. He became a well known character as he befriended fellow commuters and employees alike. Roxey became so well known that he got to ride with President Teddy Roosevelt in his private train car while en route to his summer home. In 1914, Roxey passed away at Merrick Station. In 1915, a group of female commuters donated a headstone in remembrance of Roxey.

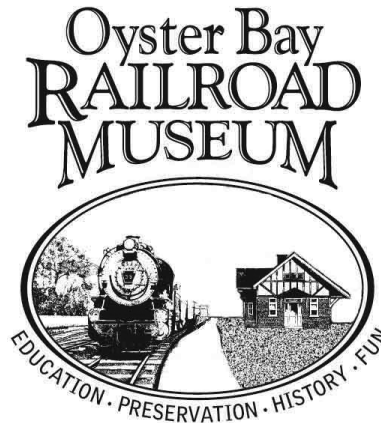


Roxey Achieves Immortality

By David D. Morrison



Oyster Bay Railroad Museum Information by John Speece



The Oyster Bay Railroad Museum will officially reopen the weekend of April 29th -30th and every weekend thereafter, noon to 4 P.M.

At the historic landmark presidential station, a new photographic exhibit, The Oyster Bay Branch, will take the visitor on a journey from Mineola to Oyster Bay, featuring stations, rolling stock and other points of interest. Another new exhibit will feature the model board and the Sunrise Special herald that were located in the former Nassau tower in Mineola that was demolished to accommodate the third track project. The big news is that the Museum, with a grant of \$125,000 from The Robert D. L. Gardiner Foundation, is developing an augmented reality Digital Tapestry project showcasing the Teddy Roosevelt experience. The station was frequently used by the president on his journeys from his home in Sagamore Hill to Washington D.C. and other destinations. Digital Tapestry is a technology that will provide visitors with a personalized experience of the life and accomplishments of T.R., using their cell phones or ipads. It is anticipated that the project will go live in early August.

At the Display Yard, the volunteers have been working every weekend to install three tracks, the initial part of the master plan for displaying our collection of rolling stock. One of the tracks houses our fully operational "Dinky" switch engine and vintage wooden caboose #12. A major attraction will be providing visitors a unique experience to board the caboose, then having the Dinky engine pull it on to the operating turntable, take a few spins on the TT and then back up onto the track. These rides will be available on Saturdays at specified times. Our M1, M7 and DE/DM simulators will be open along with caboose 50. Restoration work continues on our venerable Ping Pong coach and locomotive #35.

Looking forward to the new season and feel free to contact us at www.obrm.org, 516 558-7036 and Facebook.

April 29th book signing at OBRM

Between noon and 4 pm, on OBRM opening day, April 29, Dave Morrison will be signing his Oyster Bay Branch book and conducting open discussions on the history of the branch.

The Railroad Museum of Long Island by Don Fisher

Spring News from the Railroad Museum of Long Island

The Railroad Museum of Long Island is pleased to announce our 2023 Season began on April 1st at Riverhead. We have a full schedule of public days and happenings at the Museums this year. For this 2023, rather than promote a one weekend Riverhead Railroad Festival, we have decided to continue with "Mini-Events" each of twelve weekends throughout the months of July, August and September.

The rationale for this involves the increasing costs of putting on the Riverhead Railroad Festival, the danger of hurricanes or severe weather ruining a one weekend event, and dealing with the mass attendance the Festival brings to the Museum grounds during these continuing health concerning times. "Mini-Events" provide the train clubs and their portable layouts a place to "show" as well as two weekends of Railroad Related Flea Markets - without the danger of Festival-cancelling severe weather and overcrowding. Additionally, we will host the ever popular "Wooden Toy Train Play Days" for young train lovers on Saturday and Sunday, September 16 & 17, 2023

Here is our Museum schedule through September. I hope to see you one weekend at the Museums this season.

- Saturday, May 20th at 5 PM - RMLI Spring Membership Meeting - Greenport RMLI
- Saturday, May 27th & 28th - Memorial Day Weekend -
Greenport RMLI opens at 11 AM, Riverhead opens Saturdays and Sundays at 10 AM
- Sunday, June 18th at 1:00 PM - New York State Path through History Weekend,
"Concert in the Boxcar" at Greenport RMLI
- Saturdays, July 1st thru the 23rd at 10 AM - Mini Events at Riverhead RMLI
- Saturday & Sunday, July 29 & 30 at 10 AM - Railroad Flea Markets at Riverhead RMLI
- Saturday, August 5th thru the 20th at 10 AM - Mini Events at Riverhead RMLI
- Saturday & Sunday, August 26th & 27th at 10 AM - Railroad Flea Market at Riverhead RMLI
- Saturday, Sept. 2nd thru the 10th at 10 AM - Mini Events at Riverhead RMLI
- Saturday & Sunday, Sept. 16th & 17th at 11 AM - Wooden Toy Train Play Days at Riverhead RMLI

The LIRR Modeler by Mike Boland

THIS MONTH'S FEATURE: TWO OUTSTANDING BOOKS FOR YOU TO READ

Two new books came out recently and since they are of note, I've decided to review them both.

The first book is Railroad Diesel Tugboats Volume 1: East Coast and was written by Paul Strubeck. The name Paul Strubeck is a familiar name for those who spend time on the internet and his interest is in both marine railroading and railroading. This is a pricey book that retails for \$80—I got mine from Ron's Books—and it is published by The Garbely Publishing Company, another familiar name. This firm printed Gene Collora's two books of black and white photos of Northeast railroads not too long ago. In fact, these two fine books are still available for readers to enjoy Gene's superb photography.

This excellent book on tugboats, one of my favorite subjects, is 256 pages long and is a quality printing with a great layout and many, many fabulous photos. They're all great! This is the first volume of a comprehensive book series on railroad tugboats and was written by Paul, who is an active railroader and tugboat crewmember. The book covers the tugboats used in the railroad maritime operations in New York Harbor, the Delaware River (Philadelphia and Wilmington), Norfolk, Virginia and Baltimore Harbor.

Over 75 tugboats operated in these regions and many of the tugboats went on for many years when their railroad service concluded. This book documents their operation by various roads and their service in the years after their rail maritime service came to an end.

This book has over 400 photos, blueprints, drawings and technical data. The book covers all the major tugboat designs and there are sections of the book devoted to interior layout and components, construction methods, engine and propulsion types and how tugs interact with barges and carfloats.

Somewhat disappointing is the fact that there are only two photographs of LIRR tugboats, one of MEITOWAX and the other of LONG ISLAND, formerly LIRR tug #1. Both shots are in black and white and are apparently when both tugs wore the PRR Marine Tuscan Red paint scheme. (Yes, there was a PRR Marine Tuscan Red and it did differ for regular PRR Tuscan Red, used for the PRR's vast passenger car fleet but that's another story.)

While there is little on the LIRR tugs, this is one fine book and just super! I can't recommend this book enough. It's a MUST for railfans! Well done, Paul!

The other book is one that has been overdue. The book is from Kalmbach Media and is titled Modeler's Guide to the Right-of-Way and its author is Jeff Wilson. This is another name that model railroaders are familiar with. Wilson has written more than 40 books on railroads and model railroading. He spent ten years as associate editor for Model Railroader magazine and now free-lances as a writer, editor and photographer as he contributes articles to MR and other magazines.

This book takes you trackside for an in-depth visit to the track, roadbed and all the other items that make up a railroad right-of-way including rails, ties, ballast, roadbed, track, turnouts, crossings, signals, power lines, roads and highway grade crossings as well as trackside signals.

The book has eight chapters, is 112 pages long and has a great number of photographs of real railroads as well as a neat little helpful feature called "Modeling Tips."

A railroad's rights-of-way have much to say about the railroad itself and really defines each individual road. Every railroad's rights-of-way are distinct, unique and say much about the railroad itself. A modeler really needs to study this subject to capture the "look" of his respective railroad.

The railroad rights-of-way have been ignored for way too long. No longer! Thank you, Jeff!

This is another book from Kalmbach that all model railroaders should have.

Until next time, happy modeling!

LIST Publications ORDER FORM*The following price list is for LIST members only!*

# _____	LIRR Port Washington Branch D. Morrison NEW	@\$18 each Total _____
# _____	2023 LIRR calendar (very few remaining)	@\$8 each Total _____
# _____	The LIRR 1949-1980 by R. Sturm NEW Vol. 2	@\$38 each Total _____
# _____	The LIRR Co. A History 1834-1965 by R. Sturm	@\$38 each Total _____
# _____	Volume 1 and 2 of Bob Sturm's books	both for \$68 Total _____
# _____	Shortlines of Long Island by H. Fagerberg, E. Koehler	@\$27 each Total _____
# _____	LIRR Montauk Branch by Dave Morrison NEW	@\$18 each Total _____
# _____	LIRR Babylon Branch by Dave Morrison NEW	@\$18 each Total _____
# _____	The 185th Anniversary of the LIRR book	@\$5 each Total _____
# _____	LIRR Multiple Unit Cars by M. Boland	@\$48 each Total _____
# _____	LIRR Main Line East by D. Morrison	@\$18 each Total _____
# _____	GCT + Penn Sta. Statuary & Sculptures by Morrison	@\$18 each Total _____
# _____	LIRR Trackside with Matt Herson by M. Boland	@\$48 each Total _____
# _____	LIRR Oyster Bay Branch by D. Morrison	@\$18 each Total _____
# _____	Jamaica Station by Dave Morrison	@\$18 each Total _____
# _____	Sunnyside Yard+Hell Gate Bridge by Morrison	@\$18 each Total _____
# _____	LIRR Stations by Dave Morrison	@\$18 each Total _____
# _____	LIRR Port Jefferson Branch by D. Morrison	@\$18 each Total _____
# _____	The Long Island Rail Road, in color Vol. 1	@\$48 each Total _____
# _____	The Long Island Rail Road, In Color Vol. 2	@\$48 each Total _____
# _____	The Long Island Rail Road, In Color Vol. 3	@\$48 each Total _____
# _____	The Long Island Rail Road, In Color Vol. 4	@\$48 each Total _____
# _____	The Long Island Rail Road, In Color Vol. 5	@\$48 each Total _____
# _____	The LIRR, In Color Power 1952-2015	@\$48 each Total _____

Shipping for 1 Calendar or book is \$4.00. Shipping for both Bob Sturm's books is \$10.
 Shipping for other extra books, please call or email Steve Quigley for the shipping cost.
 NY State Residents, add 8.625% tax to the total of the merchandise PLUS the shipping.

The Long Island Sunrise Trail Chapter of the National Railway Historical Society is a non-profit 501c3 Educational Organization. The Chapter was founded in 1966 to serve the Long Island area. The SEMAPHORE is the official publication of the Chapter. Articles appearing herein do not necessarily express the attitude of the Chapter or the NRHS. Please address all correspondence and membership inquiries to: LIST-NRHS, PO Box 507, Babylon, New York 11702-0507.

Stephen F. Quigley, President

Long Island Sunrise Trail Chapter
National Railway Historical Society
PO Box 507
Babylon, New York 11702-0507

Please support your local railroad museums!

